


# ILS or LOC/DME RWY 6

ERIE INTL/TOM RIDGE FIELD (ERI)

LOC I-ERI <b>110.3</b>	APP CRS <b>064°</b>	Rwy Idg <b>7500</b> THRE <b>732</b> Apt Elev <b>732</b>
---------------------------	------------------------	---

▼ Circling to Rwy 2 and 20 NA at night. Inop table does not apply to S-ILS 6. When local altimeter setting not received, use Ashtabula, OH altimeter setting and increase DA 96 feet, all MDA 100 feet, increase S-LOC 6 Cats C/D visibility to RVR 5500 and Circling Cats C/D visibility 1/2 mile. For inop MALS, increase S-LOC 6 Cats A/B visibility to RVR 5000 and Cats C/D visibility to RVR 6000. Autopilot coupled approach NA below 1580. VDP NA with Ashtabula, OH altimeter setting. Helicopter visibility reduction below RVR 4000 NA. For inop MALS, when using Ashtabula, OH altimeter setting, increase S-ILS 6 all Cats visibility to RVR 6000, S-LOC 6 Cats A/B visibility to RVR 5000 and Cats C/D visibility to 1 3/8 mile.


**MALS**



**MISSED APPROACH:**  
Climb to 1500 then climbing right turn to 3200 on ERI VORTAC R-064 to HAMIT INT/ERI 17.7 DME and hold.

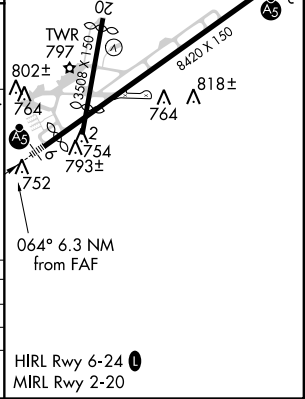
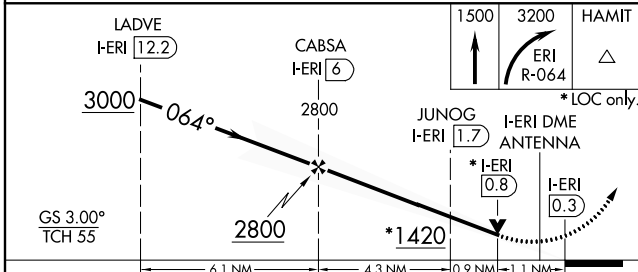
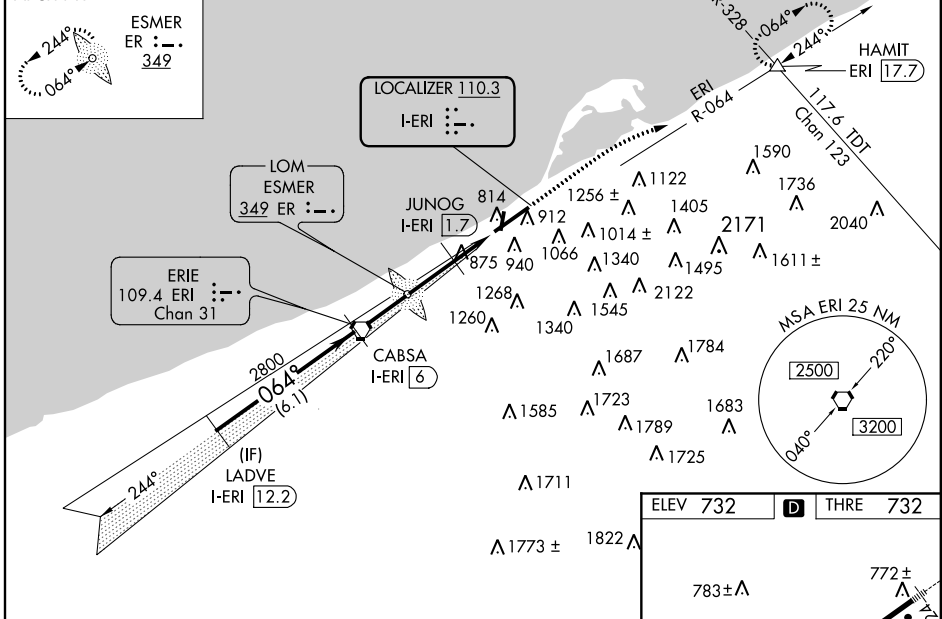
ATIS <b>120.35</b>	ERIE APP CON ★ <b>121.0 257.8</b>	ERIE TOWER ★ <b>118.1 (CTAF) 0 257.8</b>	GND CON <b>121.9</b>	CLNC DEL <b>126.8</b>	UNICOM <b>122.95</b>
-----------------------	--------------------------------------	---	-------------------------	--------------------------	-------------------------

ALTERNATE MISSED APCH FIX



ESMER  
ER : - .  
349

## RADAR REQUIRED



CATEGORY	A	B	C	D
S-ILS 6		982/40	250 (300-3/4)	
S-LOC 6		1140/40	408 (500-3/4)	
CIRCLING	1320-1 588 (600-1)	1340-1 608 (700-1)	1380-1 3/4 648 (700-1 3/4)	1380-2 648 (700-2)

NE-4, 07 FEB 2013 to 07 MAR 2013

NE-4, 07 FEB 2013 to 07 MAR 2013