

LOC/DME I-AWY 110.3 Chan 40	APP CRS 244°	Rwy Idg 7500 THRE 724 Apt Elev 732
---	------------------------	--

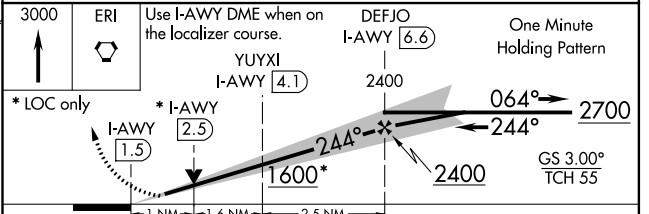
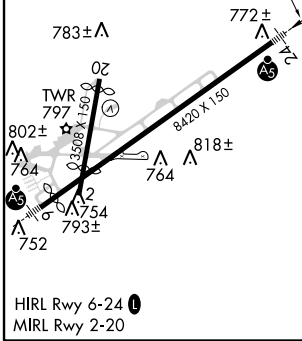
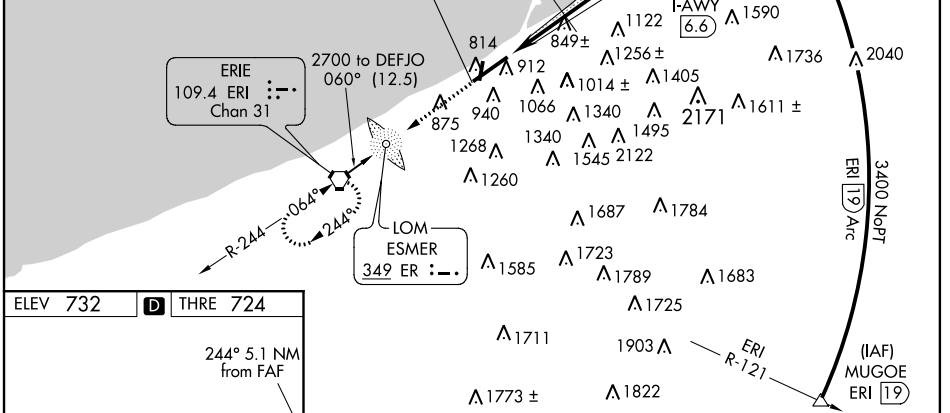
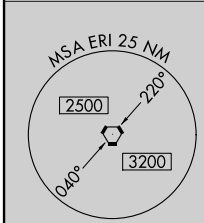
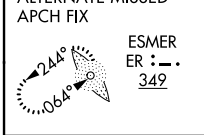
ILS or LOC/DME RWY 24

ERIE INTL/TOM RIDGE FIELD (ERI)

⚠ Circling to Rwy 02 and 20 NA at night. For inop MALSRS, increase S-LOC 24 Cats C/D visibility to 1 mile. VDP NA with Ashtabula, OH altimeter setting. When local altimeter setting not received, use Ashtabula, OH altimeter setting and increase all DA 96 feet, all MDA 100 feet, increase S-ILS 24 all Cats visibility 1/8 mile, S-LOC 24 Cats C/D visibility 3/8 mile and Circling Cats C/D visibility 1/2 mile. For inop MALSRS, when using Ashtabula, OH altimeter setting, increase S-ILS 24 all Cats visibility 1/2 mile, S-LOC 24 Cats C/D visibility 3/8 mile.

MALSRS
 MISSED APPROACH:
 Climb to 3000 direct ERI VORTAC and hold, continue climb-in-hold to 3000.

ATIS 120.35	ERIE APP CON ★ 121.0 257.8	ERIE TOWER ★ 118.1 (CTAF) 0 257.8	GND CON 121.9	CLNC DEL 126.8	UNICOM 122.95
-----------------------	--------------------------------------	---	-------------------------	--------------------------	-------------------------



CATEGORY	A	B	C	D
S-ILS 24	981-1/2 257 (300-1/2)			
S-LOC 24	1100-1/2	376 (400-1/2)	1100-5/8	376 (400-5/8)
CIRCLING	1320-1 588 (600-1)	1340-1 608 (700-1)	1380-1 3/4 648 (700-1 3/4)	1380-2 648 (700-2)

NE-4, 07 FEB 2013 to 07 MAR 2013

NE-4, 07 FEB 2013 to 07 MAR 2013