

VOR/DME RWY 3

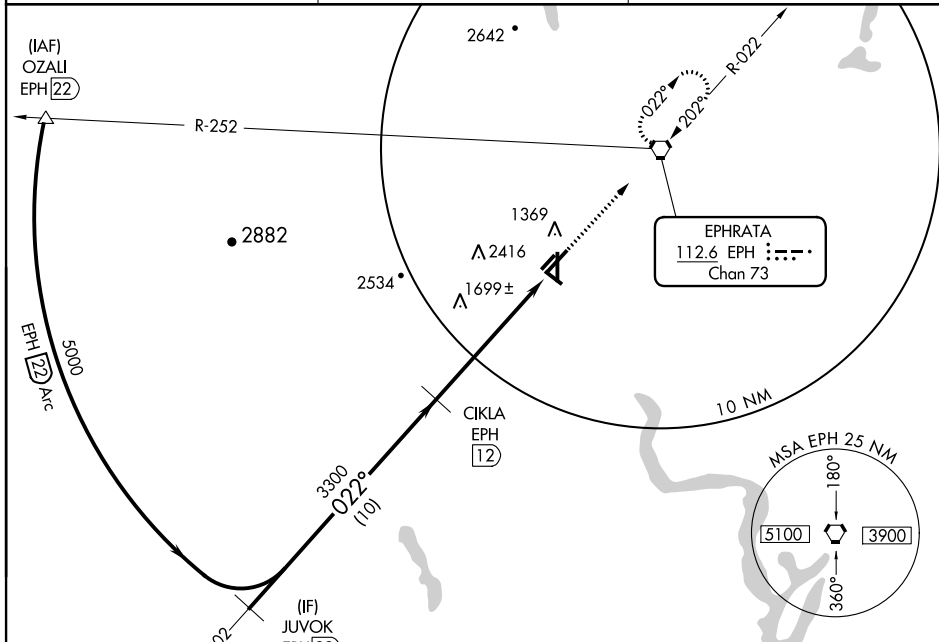
EPHRATA MUNI (EPH)

VORTAC EPH 112.6 Chan 73	APP CRS 022°	Rwy Idg TDZE 1269 Apt Elev 1276	5500
---------------------------------------	------------------------	---	-------------

- ▼ When local altimeter setting not received, use Moses Lake/Grant County Intl altimeter setting and increase all MDA 40 feet.
- ▲ VDP NA when using Moses Lake/Grant County Intl altimeter setting.

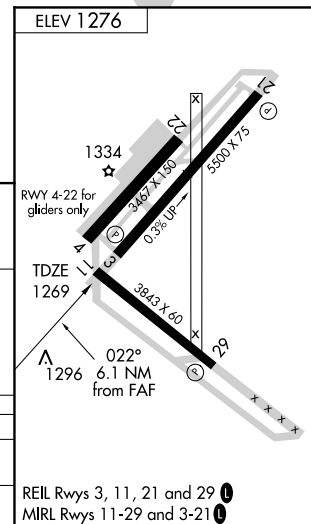
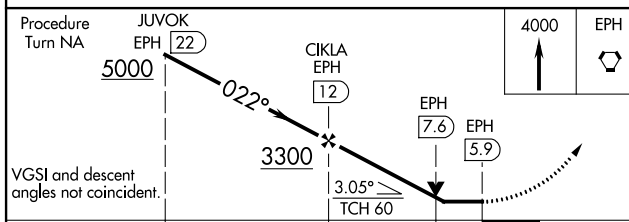
MISSED APPROACH: Climb to 4000 direct EPH VORTAC and hold, continue climb-in-hold to 4000.

ASOS 135.775	GRANT COUNTY APP CON * 126.4 379.95	UNICOM 122.8 (CTAF) ①
------------------------	---	---------------------------------



NW-1, 07 FEB 2013 to 07 MAR 2013

NW-1, 07 FEB 2013 to 07 MAR 2013



Procedure Turn NA	JUVOK EPH 22	CIKLA EPH 12	4000 EPH	
VGSI and descent angles not coincident.	5000	3300	7.6 EPH	
	10 NM	4.4 NM	5.9 EPH	
		1.7 NM		
CATEGORY	A	B	C	D
S-3	1960-1	691 (700-1)	1960-2 691 (700-2)	1960-2 1/4 691 (700-2 1/4)
CIRCLING	1960-1	684 (700-1)	1960-2 684 (700-2)	2500-3 1224 (1300-3)