

RNAV (GPS) RWY 3

EPHRATA MUNI (EPH)

WAAS CH 50208 W03A	APP CRS 027°	Rwy Idg 5500 TDZE 1269 Apt Elev 1276
--	------------------------	---

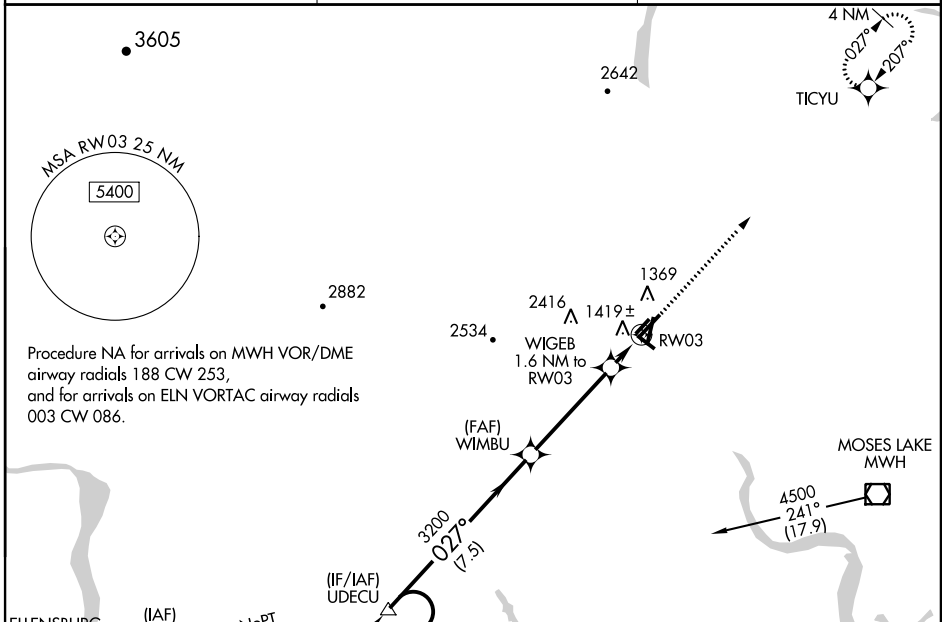
⚠ For uncompensated Baro-VNAV systems, LNAV/VNAV NA below -17°C (2°F) or above 46°C (114°F). DME/DME RNP-0.3 NA. VDP and Baro-VNAV NA when using Moses Lake/Grant County Intl altimeter setting. When local altimeter setting not received, use Moses Lake/Grant County Intl altimeter setting and increase all DA/MDA 40 feet and LNAV Cat D visibility ¼ mile.

MISSED APPROACH: Climb to 3800 direct TICYU and hold.

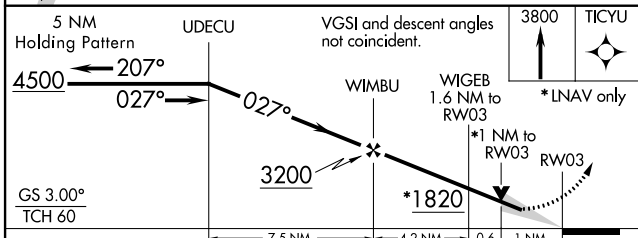
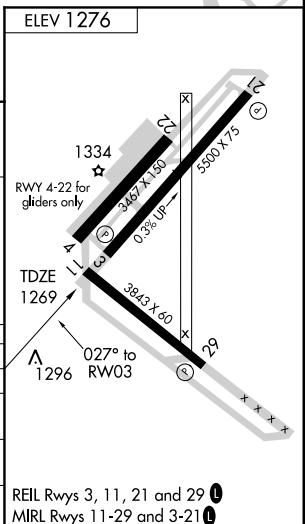
ASOS
135.775

GRANT COUNTY APP CON *
126.4 379.95

UNICOM
122.8 (CTAF)



Procedure NA for arrivals on MWH VOR/DME airway radials 188 CW 253, and for arrivals on ELN VORTAC airway radials 003 CW 086.



CATEGORY	A	B	C	D
LPV DA		1519-1	250 (300-1)	
LNAV/VNAV DA		1689-1½	420 (500-1½)	
LNAV MDA	1680-1	411 (500-1)	1680-1¼	411 (500-1¼)
CIRCLING	1720-1 444 (500-1)	1740-1 464 (500-1)	1780-1½ 504 (600-1½)	2500-3 1224 (1300-3)

NW-1, 07 FEB 2013 to 07 MAR 2013

NW-1, 07 FEB 2013 to 07 MAR 2013