

WAAS CH <b>82308</b> <b>W21A</b>	APP CRS <b>207°</b>	Rwy Idg TDZE <b>1276</b> Apt Elev <b>1276</b>
--	------------------------	---

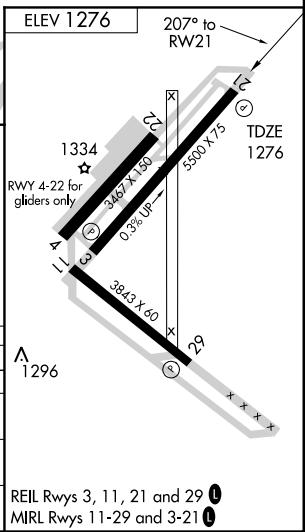
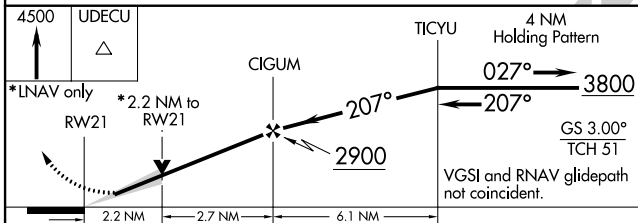
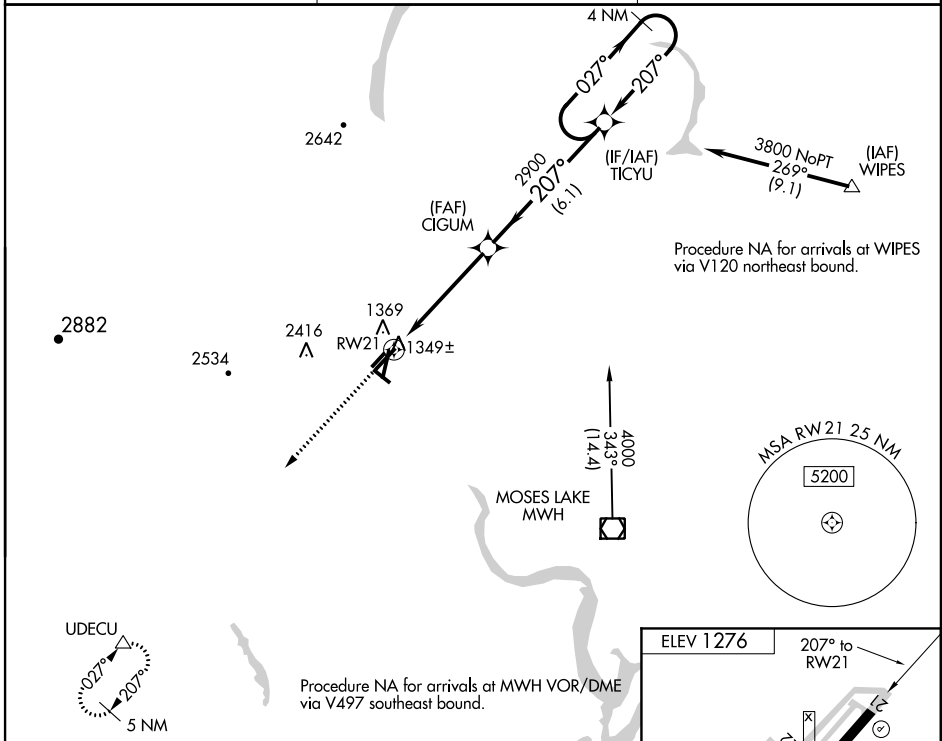
# RNAV (GPS) RWY 21

EPHRATA MUNI (EPH)

**⚠** For uncompensated Baro-VNAV systems, LNAV/VNAV NA below -17°C (2°F) or above 46°C (114°F). DME/DME RNP-0.3 NA. VDP and Baro-VNAV NA when using Moses Lake/Grant County Intl altimeter setting. When local altimeter setting not received, use Moses Lake/Grant County Intl altimeter setting and increase all DA/MDA 40 feet; Increase visibility LPV all Cats., LNAV Cats. C and D and Circling Cat. C ¼ mile.

**MISSED APPROACH:** Climb to 4500 direct UDECU and hold.

ASOS <b>135.775</b>	GRANT COUNTY APP CON * <b>126.4 379.95</b>	UNICOM <b>122.8 (CTAF)</b>
------------------------	---	-------------------------------



CATEGORY	A	B	C	D
LPV DA		1526-3/4	250 (300-3/4)	
LNAV/VNAV DA		2171-4	895 (900-4)	
LNAV MDA	2020-1 744 (800-1)	2020-1 1/4 744 (800-1 1/4)	2020-2 1/4 744 (800-2 1/4)	2020-2 1/2 744 (800-2 1/2)
CIRCLING	2020-1 744 (800-1)	2020-1 1/4 744 (800-1 1/4)	2020-2 1/4 744 (800-2 1/4)	2500-3 1224 (1300-3)

NW-1, 07 FEB 2013 to 07 MAR 2013

NW-1, 07 FEB 2013 to 07 MAR 2013

REIL Rwy 3, 11, 21 and 29  
MIRL Rwy 11-29 and 3-21