

ENID, OKLAHOMA

AL-136 (FAA)

12040

VOR/DME ODG 109.0 Chan 27	APP CRS 357°	Rwy Idg 6249 TDZE 1152 Apt Elev 1167
--	------------------------	---

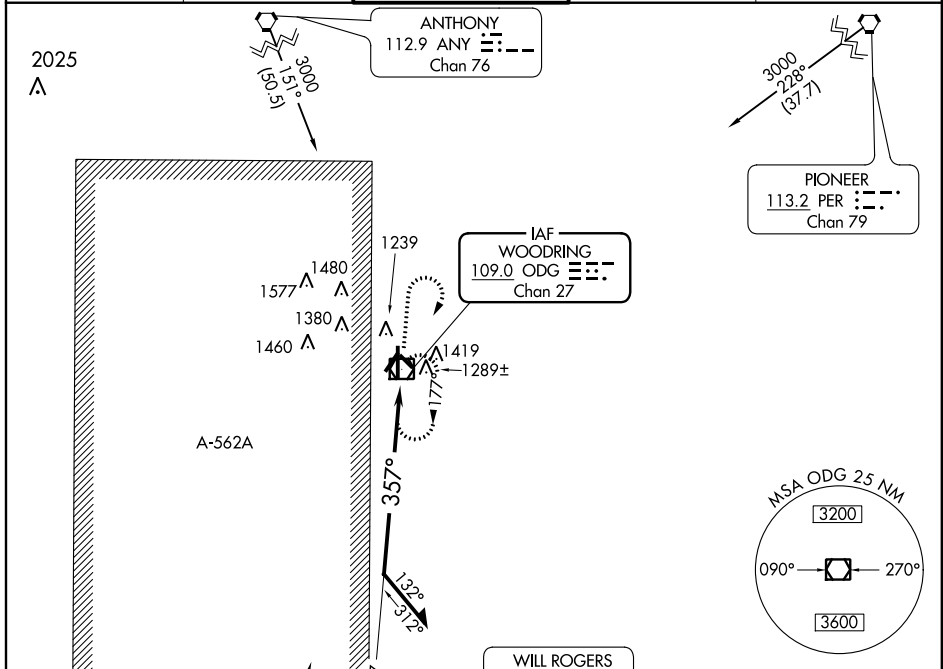
VOR RWY 35

ENID WOODRING RGNL (WDG)

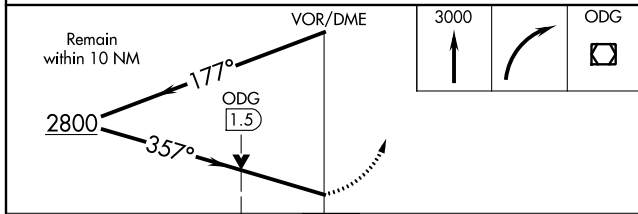
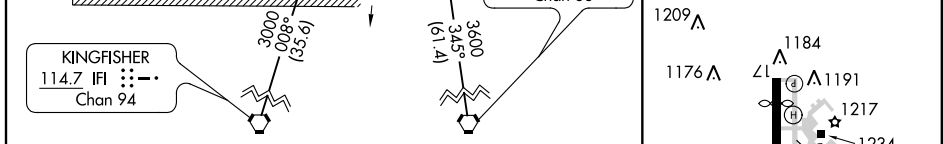
⚠ When local altimeter setting not received, use Guthrie altimeter setting and increase all MDA 100 feet, S-35 Cat C/D visibility and Circling Cat C visibility ¼ mile. VDP NA when using Guthrie altimeter setting.

MALSR MISSED APPROACH: Climb to 3000 then right turn direct ODG VOR/DME and hold.

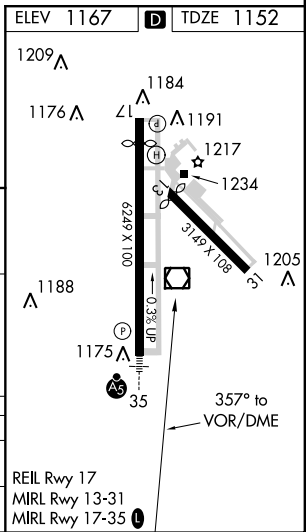
AWOS-3 120.625	VANCE APP CON * 121.3 346.325	WOODRING TOWER * 118.9 (CTAF) 0 257.95	GND CON 121.925	UNICOM 122.95
--------------------------	---	--	---------------------------	-------------------------



ELEV 1167	D TDZE 1152
-----------	--------------------



CATEGORY	A	B	C	D
S-35	1600-½ 448 (500-½)		1600-¾ 448 (500-¾)	1600-1 448 (500-1)
CIRCLING	1740-1 573 (600-1)		1740-½ 573 (600-½)	1740-2 573 (600-2)



SC-1, 07 FEB 2013 to 07 MAR 2013

SC-1, 07 FEB 2013 to 07 MAR 2013

ENID, OKLAHOMA
Amdt 14A 08APR10

36°23'N-97°47'W

ENID WOODRING RGNL (WDG) VOR RWY 35