

ENID, OKLAHOMA

AL-136 (FAA)

VOR/DME ODG <b>109.0</b> Chan 27	APP CRS <b>167°</b>	Rwy Idg <b>5638</b> TDZE <b>1165</b> Apt Elev <b>1167</b>
--	------------------------	---

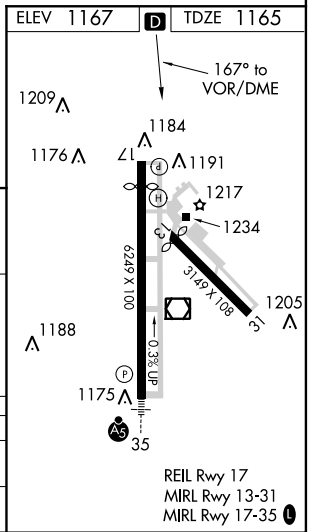
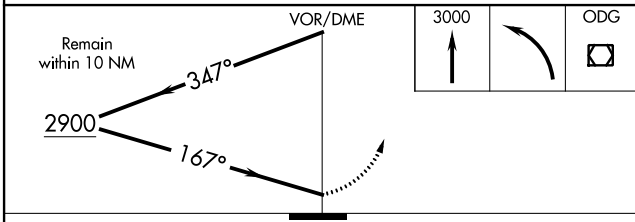
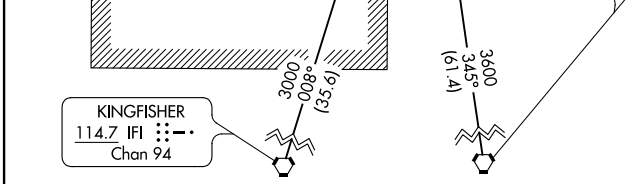
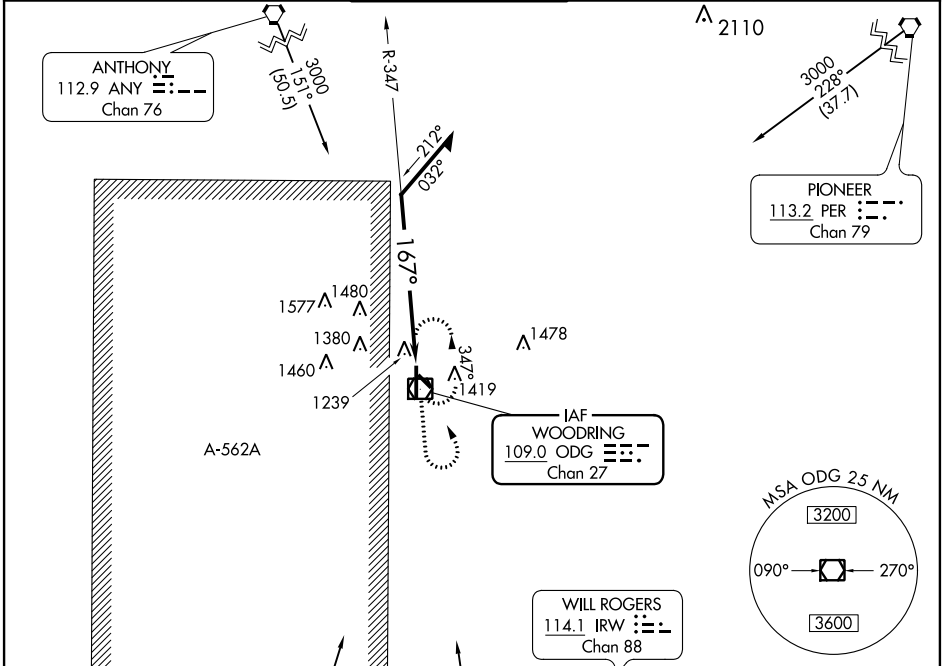
# VOR RWY 17

ENID WOODRING RGNL (WDG)

**⚠** When local altimeter setting not received, use Guthrie altimeter setting and increase all MDA 100 feet, S-17 Cat C/D visibility and Circling Cat C/D visibility ¼ mile. Visibility reduction by helicopters NA.

**MISSED APPROACH:** Climb to 3000 then left turn direct ODG VOR/DME and hold.

AWOS-3 <b>120.625</b>	VANCE APP CON * <b>121.3 378.8</b>	WOODRING TOWER * <b>118.9 (CTAF) 257.95</b>	GND CON <b>121.925</b>	UNICOM <b>122.95</b>
--------------------------	---------------------------------------	--	---------------------------	-------------------------



CATEGORY	A	B	C	D
S-17	1800-1	635 (700-1)	1800-1¾ 635 (700-1¾)	1800-2 635 (700-2)
CIRCLING	1800-1	633 (700-1)	1800-1¾ 633 (700-1¾)	1800-2 633 (700-2)

ENID, OKLAHOMA  
Amdt 13 12040

36°23'N-97°47'W

# ENID WOODRING RGNL (WDG) VOR RWY 17

SC-1, 07 FEB 2013 to 07 MAR 2013

SC-1, 07 FEB 2013 to 07 MAR 2013