


WAAS CH 97413 W35A	APP CRS 355°	Rwy Idg 6249 TDZE 1152 Apt Elev 1167
--	------------------------	---

RNAV (GPS) RWY 35

ENID WOODRING RGNL (WDG)

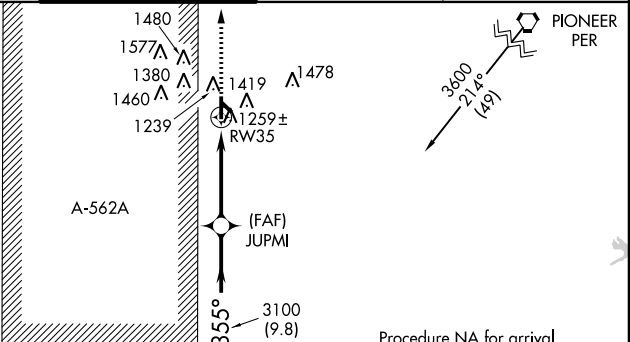
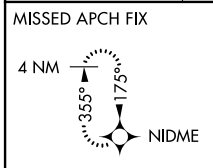
⚠ For uncompensated Baro-VNAV systems, LNAV/VNAV NA below -17°C (2°F) or above 46°C (114°F). DME/DME RNP-0.3 NA. When local altimeter setting not received, use Guthrie altimeter setting and increase all DA 98 feet and all MDA 100 feet; increase LNAV/VNAV all Cats visibility to 1¼ miles, LNAV Cat C visibility to 1 mile and Circling Cat C visibility to 1¾ miles. Baro-VNAV and VDP NA when using Guthrie altimeter setting. For inoperative MALS/R, increase LNAV Cat D visibility to 1¼ miles. For inoperative MALS/R, when using Guthrie altimeter setting, increase LPV all Cats visibility to 1 mile, LNAV/VNAV all Cats visibility to 1¾ miles and LNAV Cats C and D visibility to 1½ miles.

MALS/R

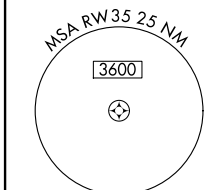


MISSED APPROACH:
Climb to 3000 direct NIDME and hold.

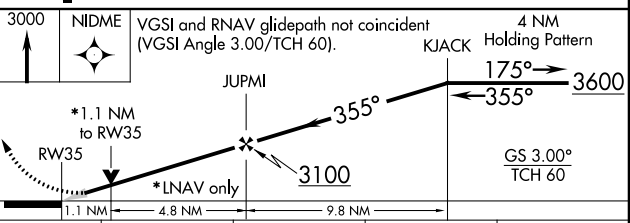
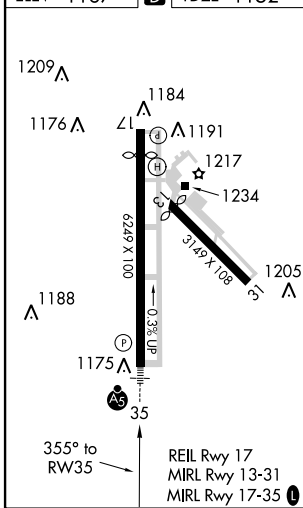
AWOS-3 120.625	VANCE APP CON * 121.3 346.325	WOODRING TOWER * 118.9 (CTAF) 0 257.95	GND CON 121.925	UNICOM 122.95
--------------------------	---	--	---------------------------	-------------------------



Procedure NA for arrival at PER VORTAC via V354 northbound.



ELEV 1167	D	TDZE 1152
-----------	----------	-----------



CATEGORY	A	B	C	D
LPV DA		1352-½	200 (200-½)	
LNAV/VNAV DA		1541-¾	389 (400-¾)	
LNAV MDA	1560-½	408 (400-½)	1560-¾ 408 (400-¾)	1560-1 408 (400-1)
CIRCLING	1740-1	573 (600-1)	1740-1½ 573 (600-1½)	1740-2 573 (600-2)

SC-1, 07 FEB 2013 to 07 MAR 2013

SC-1, 07 FEB 2013 to 07 MAR 2013