

WAAS CH <b>50213</b> <b>W17A</b>	APP CRS <b>175°</b>	Rwy Idg <b>5638</b> TDZE <b>1165</b> Apt Elev <b>1167</b>
----------------------------------------	------------------------	-----------------------------------------------------------------

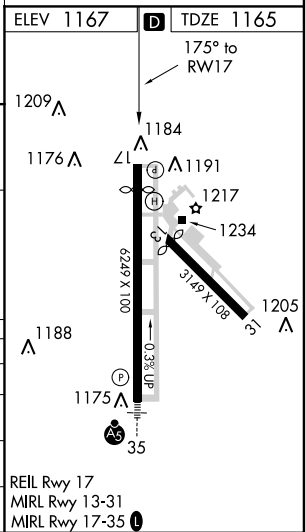
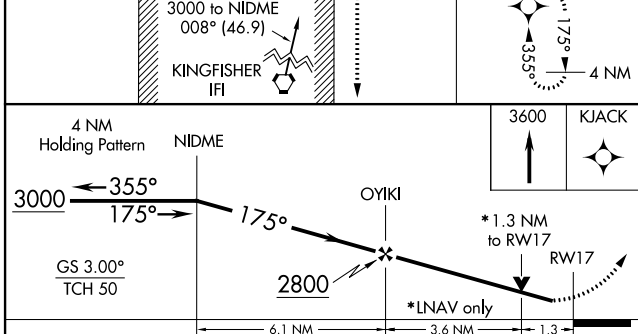
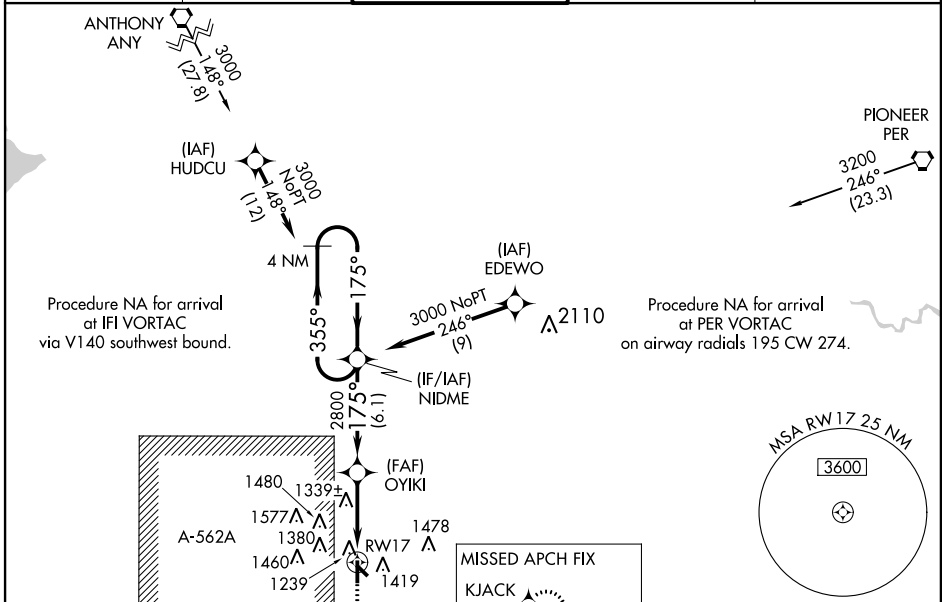
# RNAV (GPS) RWY 17

ENID WOODRING RGNL (WDG)

**⚠** For uncompensated Baro-VNAV systems, LNAV/VNAV NA below -17°C (2°F) or above 46°C (114°F).  
**⚠** DME/DME RNP-0.3 NA. Visibility reduction by helicopters NA. When local altimeter setting not received, use Guthrie altimeter setting and increase all DA 98 feet and all MDA 100 feet; increase LPV all Cats visibility to 1½ miles, LNAV/VNAV all Cats visibility to 1¾ miles, LNAV Cat C visibility to 1½ miles, LNAV Cat D visibility to 1¾ miles, Circling Cat C visibility to 2 miles and Circling Cat D visibility to 2½ miles. Baro-VNAV and VDP NA when using Guthrie altimeter setting.

**MISSED APPROACH:**  
Climb to 3600 direct KJACK and hold.

AWOS-3 <b>120.625</b>	VANCE APP CON ★ <b>121.3 346.325</b>	WOODRING TOWER ★ <b>118.9 (CTAF) 0 257.95</b>	GND CON <b>121.925</b>	UNICOM <b>122.95</b>
--------------------------	-----------------------------------------	--------------------------------------------------	---------------------------	-------------------------



CATEGORY	A	B	C	D
LPV DA		1415-¾	250 (300-¾)	
LNAV/VNAV DA		1594-1½	429 (500-1½)	
LNAV MDA	1640-1	475 (500-1)	1640-1¼ 475 (500-1¼)	1640-1½ 475 (500-1½)
CIRCLING	1740-1	573 (600-1)	1740-1½ 573 (600-1½)	1740-2 573 (600-2)

SC-1, 07 FEB 2013 to 07 MAR 2013

SC-1, 07 FEB 2013 to 07 MAR 2013