

ENID, OKLAHOMA

# VOR/DME or TACAN RWY 35C

VORTAC END <b>115.4</b> Chan <b>101</b>	APCH CRS <b>349°</b>	Rwy Idg <b>9217</b> THRE <b>1293</b> Arpt Elev <b>1307</b>
---	-------------------------	--

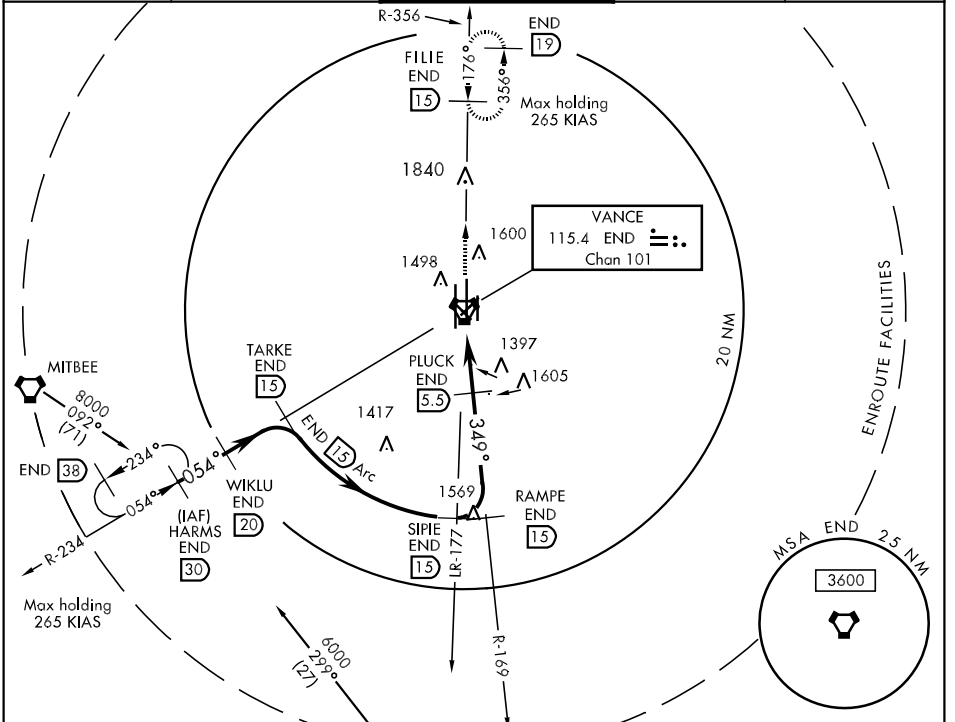
AL-135 [USAF]

VANCE AFB (KEND)

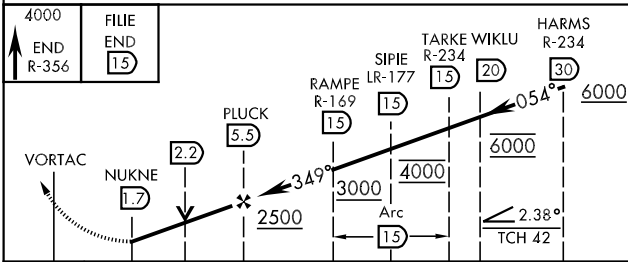
**▼** \* When ALS inop, increase CAT AB RVR to 55 and vis to 1 mile, CAT CDE RVR to 60 and vis to 1½ miles.  
\*\* Circling not authorized at night to Rwy 35R.

**Ⓜ** SALSF MISSED APPROACH: Climb to 4000, intercept END VORTAC R-356 to FILE and hold.

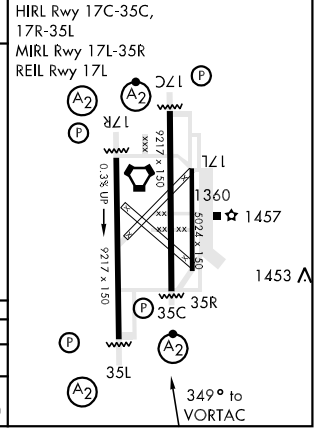
ATIS ★ <b>115.4 263.15</b>	VANCE APP CON <b>E125.45 388.2</b> <b>W126.75 346.325</b>	VANCE TOWER ★ <b>124.05 259.1</b>	GND CON <b>121.8 289.4</b>	CLNC DEL <b>225.4</b>
-------------------------------	---	--------------------------------------	-------------------------------	--------------------------



EMERG SAFE ALT 100 NM 4800



ELEV 1307	THRE 1293
-----------	-----------



CATEGORY	A	B	C	D	E
S-35C *	1680/40 387 (400-¾)		1680/45 387 (400-¾)		
CIRCLING **	1760-1 453 (500-1)		1760-1½ 453 (500-1½)	1860-2 553 (600-2)	2300-3 993 (1000-3)

ENID, OKLAHOMA  
Amdt 2 26JUL12

36° 20' N-97° 55' W

VANCE AFB (KEND)

# VOR/DME or TACAN RWY 35C

SC-1, 07 FEB 2013 to 07 MAR 2013

SC-1, 07 FEB 2013 to 07 MAR 2013