

ENID, OKLAHOMA

VOR/DME or TACAN RWY 17C

VORTAC END 115.4 Chan 101	APCH CRS 182°	Rwy Idg THRE 1276 Arpt Elev 1307
---	-------------------------	--

AL-135 [USAF]

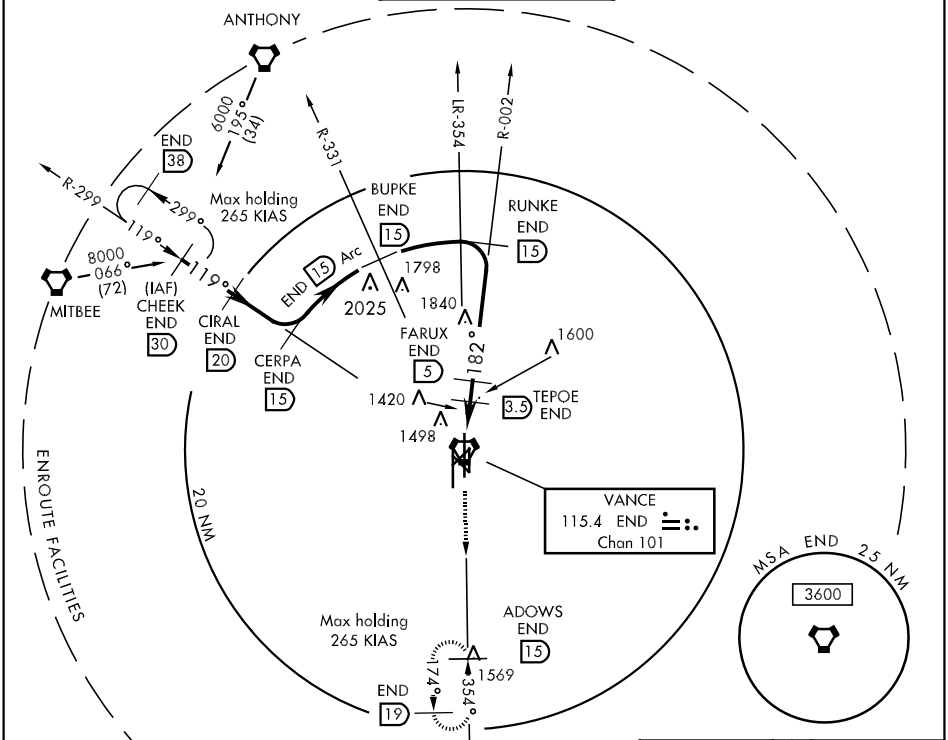
VANCE AFB (KEND)

▼ * When ALS inop, increase CAT AB RVR to 55 and vis to 1 mile, CAT CDE RVR to 60 and vis to 1½ miles.
** Circling not authorized at night to Rwy 35R.



MISSED APPROACH: Climb to 4000, intercept END VORTAC R-174 to ADOWS and hold.

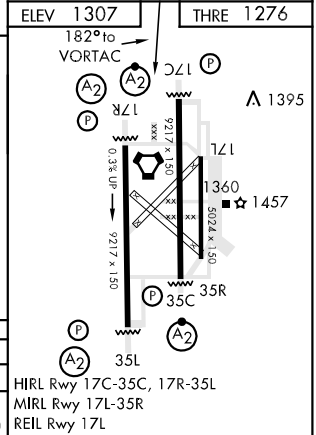
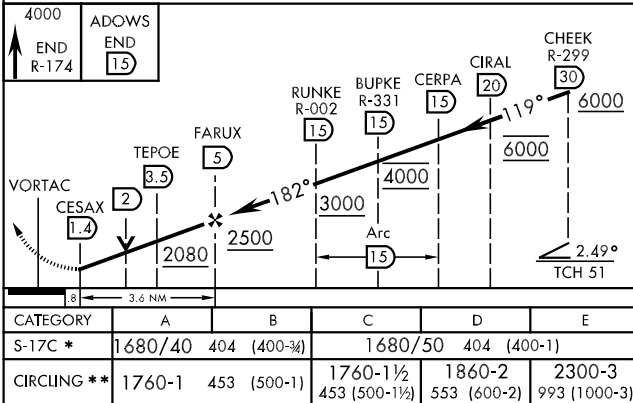
ATIS ★ 115.4 263.15	VANCE APP CON E125.45 388.2 W126.75 346.325	VANCE TOWER ★ 124.05 259.1	GND CON 121.8 289.4	CLNC DEL 225.4
-------------------------------	---	--------------------------------------	-------------------------------	--------------------------



SC-1, 07 FEB 2013 to 07 MAR 2013

SC-1, 07 FEB 2013 to 07 MAR 2013

EMERG SAFE ALT 100 NM 4800



CATEGORY	A	B	C	D	E
S-17C *	1680/40	404 (400-3)	1680/50	404 (400-1)	
CIRCLING **	1760-1	453 (500-1)	1760-1½ 453 (500-1½)	1860-2 553 (600-2)	2300-3 993 (1000-3)

ENID, OKLAHOMA
Amdt 2 26JUL12

36° 20'N-97° 55'W

VANCE AFB (KEND)

VOR/DME or TACAN RWY 17C