

ENID, OKLAHOMA

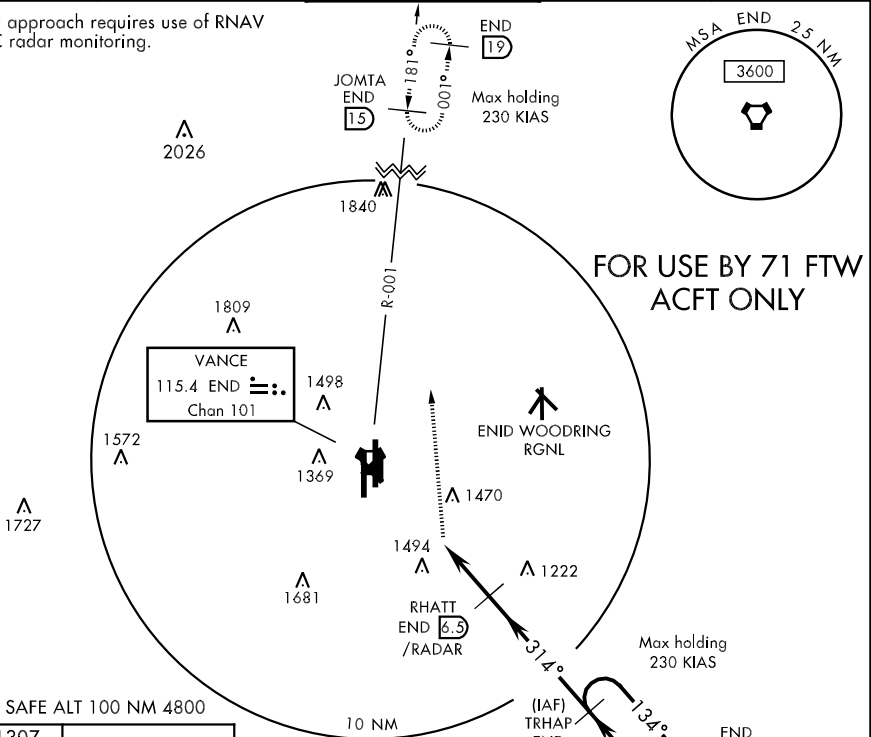
VOR/DME-A

VORTAC END 115.4 Chan 101	APCH CRS 314°	Rwy Idg TDZE N/A Arpt Elev 1307	AL-135 [USAF]	VANCE AFB (KEND)
---	-------------------------	---	---------------	------------------

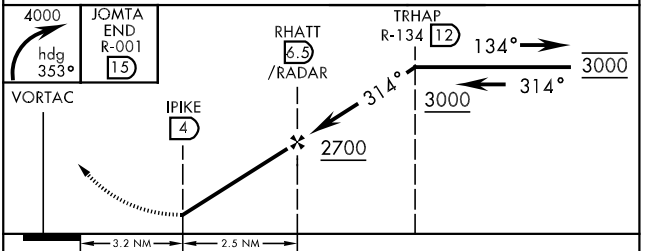
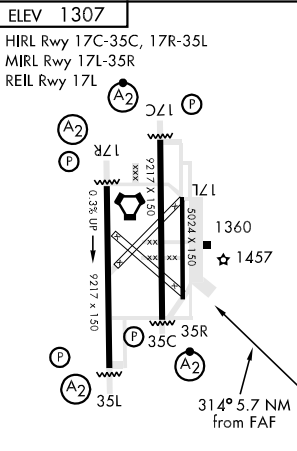
▼ * Circle to remain East of Rwy 35R/17L extended centerline unless directed otherwise by ATC. Circling NA at night to Rwy 35R.
 MISSED APPROACH: Immediate climbing right turn to 4000 via heading 353° to JOMTA and hold.

ATIS ★ 115.4 263.15	VANCE APP CON E125.45 388.2 W126.75 346.325	VANCE TOWER ★ 124.05 259.1	GND CON 121.8 289.4	CLNC DEL 225.4
-------------------------------	---	--------------------------------------	-------------------------------	--------------------------

Missed approach requires use of RNAV or ATC radar monitoring.



EMERG SAFE ALT 100 NM 4800



CATEGORY	A	B	C	D	E
CIRCLING *	1780-3	473 (500-3)	NOT AUTHORIZED		

ENID, OKLAHOMA
Amdt 3 12208

36°20'N-97°55'W

VANCE AFB (KEND)
VOR/DME-A

SC-1, 07 FEB 2013 to 07 MAR 2013

SC-1, 07 FEB 2013 to 07 MAR 2013