

ENID, OKLAHOMA

RNAV (GPS)-B

APCH CRS 199°	Rwy Idg TDZE Arprt Elev	N/A N/A 1307
-------------------------	-------------------------------	---

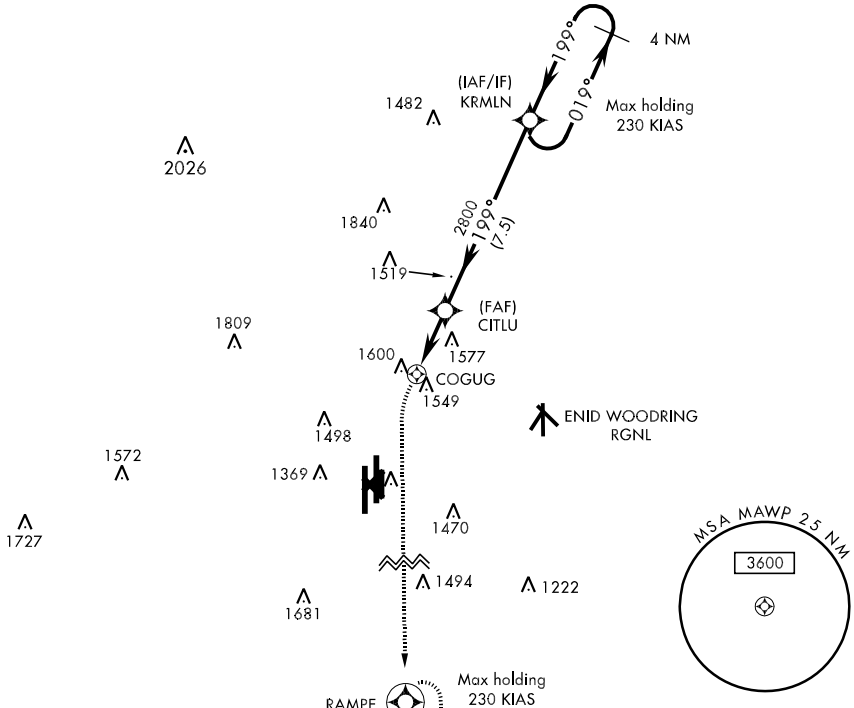
AL-135 [USAF]

VANCE AFB (KEND)

▼ * Circle to remain East of Rwy 35R/17L extended centerline unless directed otherwise by ATC. Circling not authorized at night to Rwy 35R. MISSED APPROACH: Climbing left turn to 4000 direct to RAMPE and hold.

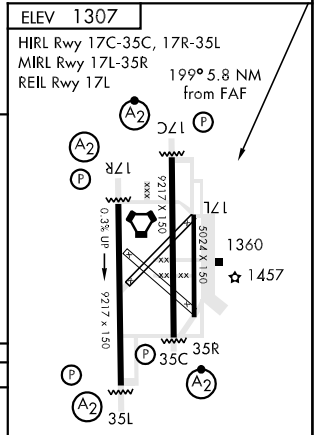
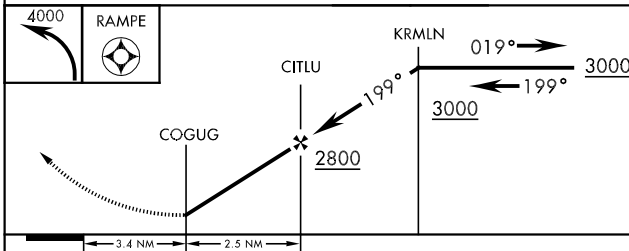
ATIS ★ 115.4 263.15	VANCE APP CON E125.45 388.2 W121.3 291.1	VANCE TOWER ★ 124.05 259.1	GND CON 121.8 289.4	CLNC DEL 225.4
-------------------------------	--	--------------------------------------	-------------------------------	--------------------------

DME/DME RNP-0.3 NA.



**FOR USE BY 71 FTW
ACFT ONLY**

EMERG SAFE ALT 100 NM COGUG 4800



CATEGORY	A	B	C	D	E
CIRCLING *	1880-3	573 (600-3)	NOT AUTHORIZED		

ENID, OKLAHOMA
Amdt 3 12208

36°20'N-97°55'W

VANCE AFB (KEND)

RNAV (GPS)-B

SC-1, 07 FEB 2013 to 07 MAR 2013

SC-1, 07 FEB 2013 to 07 MAR 2013