

ENID, OKLAHOMA

RNAV (GPS)-A

APCH CRS 314°	Rwy Idg TDZE Arpt Elev N/A N/A 1307
-------------------------	---

AL-135 [USAF]

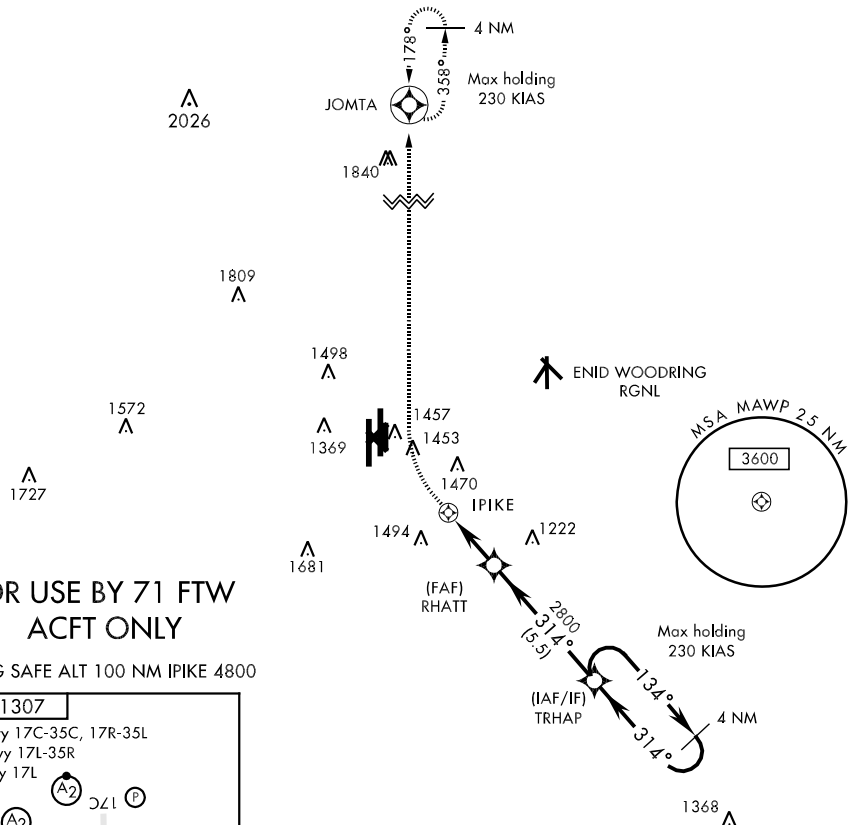
VANCE AFB (KEND)

▼ * Circle to remain East of Rwy 35R/17L extended centerline unless directed otherwise by ATC. Circling not authorized at night to Rwy 35R.

MISSED APPROACH: Climbing right turn to 4000 direct to JOMTA and hold.

ATIS ★ 115.4 263.15	VANCE APP CON E125.45 388.2 W126.75 346.325	VANCE TOWER ★ 124.05 259.1	GND CON 121.8 289.4	CLNC DEL 225.4
-------------------------------	---	--------------------------------------	-------------------------------	--------------------------

DME/DME RNP-0.3 NA.



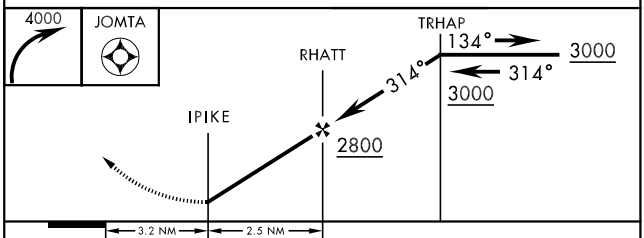
**FOR USE BY 71 FTW
ACFT ONLY**

EMERG SAFE ALT 100 NM IPIKE 4800

ELEV 1307

HIRL Rwy 17C-35C, 17R-35L
MIRL Rwy 17L-35R
REIL Rwy 17L

314° 5.7 NM from FAF



CATEGORY	A	B	C	D	E
CIRCLING *	1760-3	453 (500-3)	NOT AUTHORIZED		

ENID, OKLAHOMA

36°20'N-97°55'W

VANCE AFB (KEND)

Amdt 3 12208

RNAV (GPS)-A

SC-1, 07 FEB 2013 to 07 MAR 2013

SC-1, 07 FEB 2013 to 07 MAR 2013