

RNAV (GPS) RWY 35R

APCH CRS 355°	Rwy Idg THRE Arprt Elev	5024 1284 1307
-------------------------	-------------------------------	---

AL-135 [USAF]

VANCE AFB (KEND)

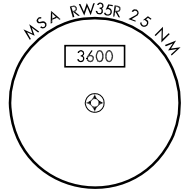
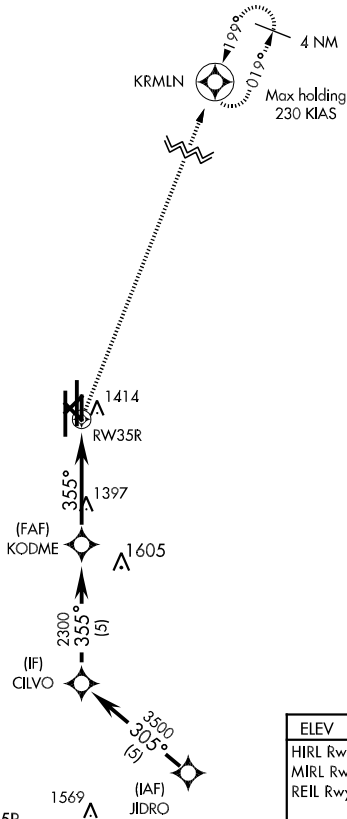
Procedure not authorized at night.
DME/DME RNP-0.3 NA.

MISSED APPROACH: Climbing right turn to 4300 direct KRMLN and hold.

ATIS ★ 115.4 263.15	VANCE APP CON E125.45 388.2 W126.75 346.325	VANCE TOWER ★ 124.05 259.1	GND CON 121.8 289.4	CLNC DEL 225.4
-------------------------------	---	--------------------------------------	-------------------------------	--------------------------

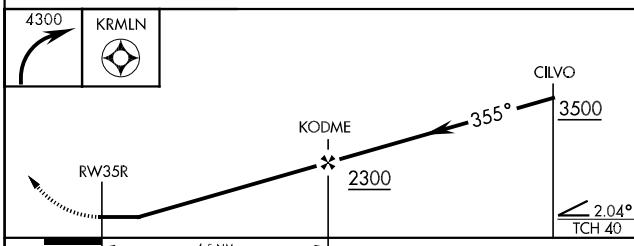
USAF Only:
Straight-in Rwy 35R authorized at night with MAJCOM A3 approval.

FOR USE BY 71FTW AIRCRAFT ONLY



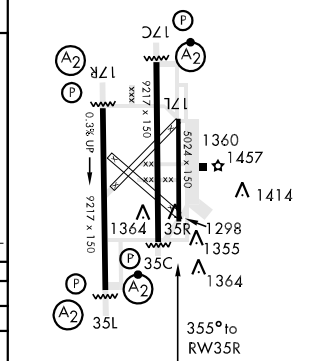
RADAR REQUIRED

EMERG SAFE ALT 100 NM 4800 FROM RWY35R



CATEGORY	A	B	C	D	E
RNAV MDA	1700-1	416 (400-1)	NOT AUTHORIZED		
CIRCLING	1760-1	453 (500-1)	NOT AUTHORIZED		

ELEV 1307	THRE 1284
HIRL Rwy 17C-35C, 17R-35L	
MIRL Rwy 17L-35R	
REIL Rwy 17L	



RNAV (GPS) RWY 35R

SC-1, 07 FEB 2013 to 07 MAR 2013

SC-1, 07 FEB 2013 to 07 MAR 2013