

RNAV (GPS) RWY 35C

APCH CRS 355°	Rwy Idg 9217
	THRE 1293
	Arprt Elev 1307

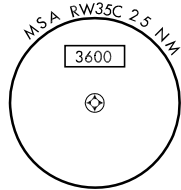
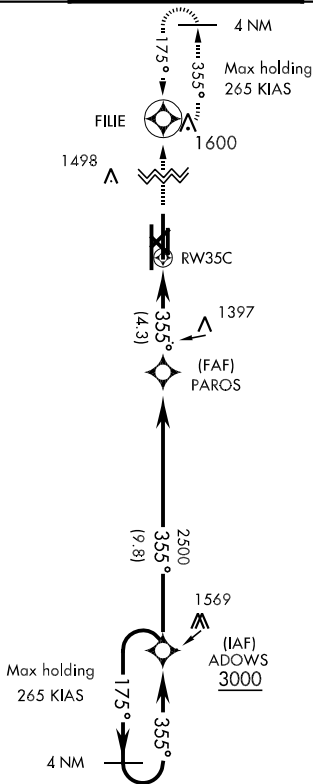
AL-135 [USAF]

VANCE AFB (KEND)

<p>▼ * When ALS inop, increase CAT AB RVR to 55 and vis to 1 mile, CAT CDE RVR to 60 and vis to 1½ miles. ** Circling not authorized at night to RWY 35R.</p>	<p>SALSF A2</p>	<p>MISSED APPROACH: Climb to 4000 direct FILE and hold.</p>

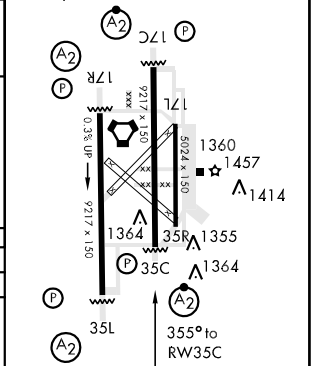
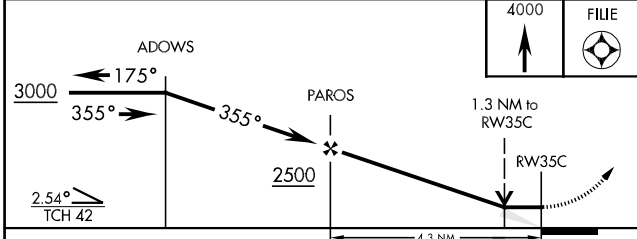
<p>ATIS ★ 115.4 263.15</p>	<p>VANCE APP CON E125.45 388.2 W126.75 346.325</p>	<p>VANCE TOWER ★ 124.05 259.1</p>	<p>GND CON 121.8 289.4</p>	<p>CLNC DEL 225.4</p>
---------------------------------------	--	--	---------------------------------------	----------------------------------

DME/DME RNP-0.3 NA.



EMERG SAFE ALT 100 NM 4800 FROM RW35C

ELEV 1307	THRE 1293
HIRL Rwy 17C-35C, 17R-35L	
MIRL Rwy 17L-35R	
REIL Rwy 17L	



CATEGORY	A	B	C	D	E
RNAV MDA *	1680/40 387 (400-¾)		1680/45 387 (400-¾)		
CIRCLING **	1760-1 453 (500-1)		1760-1½ 453 (500-1½)	1860-2 553 (600-2)	2300-3 993 (1000-3)

RNAV (GPS) RWY 35C

SC-1, 07 FEB 2013 to 07 MAR 2013

SC-1, 07 FEB 2013 to 07 MAR 2013