

RNAV (GPS) RWY 17L

APCH CRS 175°	Rwy Idg THRE Arpt Elev	5024 1273 1307
-------------------------	------------------------------	---

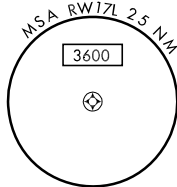
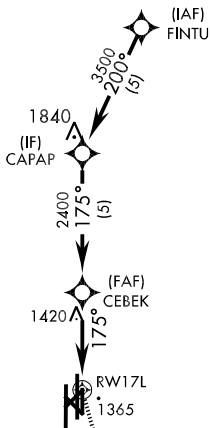
AL-135 [USAF]

VANCE AFB (KEND)

▼ * Circling not authorized at night to RWY 35R.
DME/DME RNP-0.3 NA.

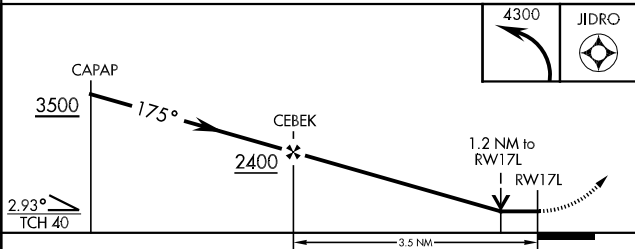
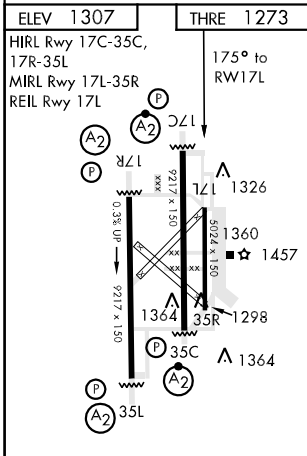
MISSED APPROACH: Climbing left turn to 4300 direct JIDRO and hold.

ATIS ★ 115.4 263.15	VANCE APP CON E125.45 388.2 W126.75 346.325	VANCE TOWER ★ 124.05 259.1	GND CON 121.8 289.4	CLNC DEL 225.4
-------------------------------	---	--------------------------------------	-------------------------------	--------------------------



**RADAR REQUIRED
FOR USE BY 71FTW
AIRCRAFT ONLY**

EMERG SAFE ALT 100 NM 4800 FROM RWY17L



CATEGORY	A	B	C	D	E
LNAV MDA	1700-1	427 (400-1)	NOT AUTHORIZED		
CIRCLING *	1760-1	453 (500-1)	NOT AUTHORIZED		

RNAV (GPS) RWY 17L

SC-1, 07 FEB 2013 to 07 MAR 2013

SC-1, 07 FEB 2013 to 07 MAR 2013