

RNAV (GPS) RWY 17C

APCH CRS 175°	Rwy Idg 9217
	THRE 1276
	Arprt Elev 1307

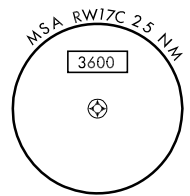
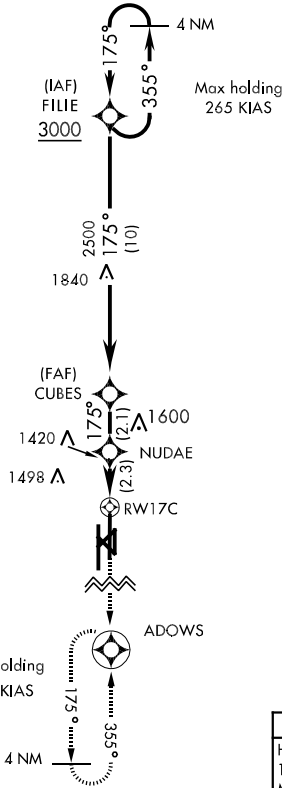
AL-135 [USAF]

VANCE AFB (KEND)

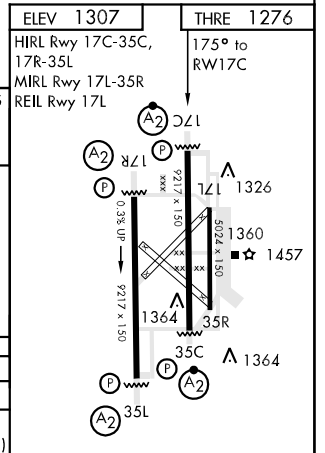
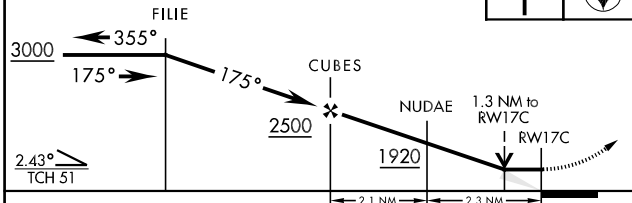
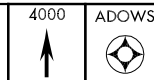
<p>▼ * When ALS inop, increase CAT AB RVR to 55 and vis to 1 mile, CAT CDE RVR to 60 and vis to 1½ miles. ** Circling not authorized at night to RWY 35R.</p>	<p>SALSF A2</p>	<p>MISSED APPROACH: Climb to 4000 direct ADOWS and hold.</p>
---	----------------------------	--

<p>ATIS ★ 115.4 263.15</p>	<p>VANCE APP CON E125.45 388.2 W126.75 346.325</p>	<p>VANCE TOWER ★ 124.05 259.1</p>	<p>GND CON 121.8 289.4</p>	<p>CLNC DEL 225.4</p>
---------------------------------------	--	--	---------------------------------------	----------------------------------

DME/DME RNP-0.3 NA.



EMERG SAFE ALT 100 NM
4800 FROM RW17C



CATEGORY	A	B	C	D	E
LNAV MDA *	1680/40	404 (400-34)	1680/50	404 (400-1)	
CIRCLING **	1760-1	453 (500-1)	1760-1½ 453 (500-1½)	1860-2 553 (600-2)	2300-3 993 (1000-3)

RNAV (GPS) RWY 17C

SC-1, 07 FEB 2013 to 07 MAR 2013

SC-1, 07 FEB 2013 to 07 MAR 2013