

JAYHAWKE-TWO DEPARTURE (JHK 2•IFI)

SL-135 [USAF]

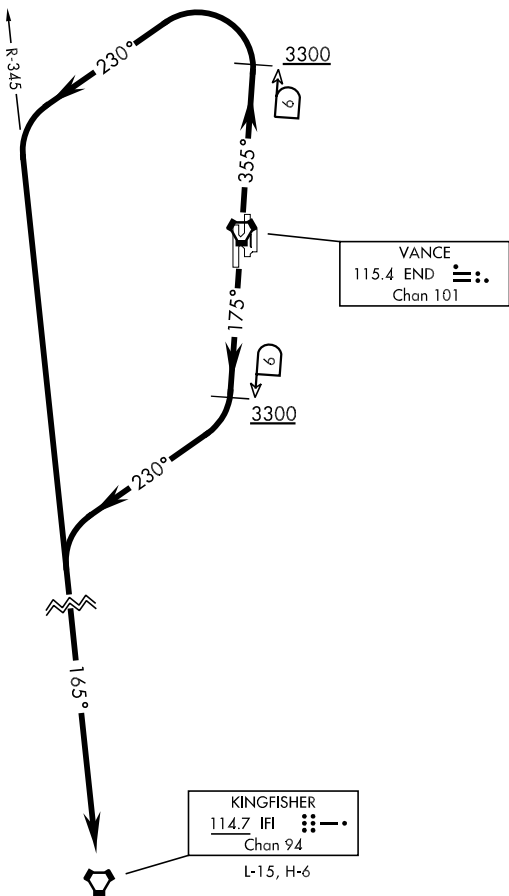
VANCE AFB (KEND)

ENID, OKLAHOMA

ATIS ★ 115.4 263.15
 CLNC DEL
 225.4
 GND CON
 121.8 289.4
 VANCE TOWER ★
 124.05 259.1
 VANCE DEP CON
 120.525 306.3
 FORT WORTH CENTER
 128.4 290.2

Rwy	Knots	60	120	180	240
35L	V/V(fpm)	360	710	1060	1420
35C	V/V(fpm)	380	760	1140	1510
17R	V/V(fpm)	430	850	1270	1690
17C	V/V(fpm)	400	790	1180	1580

ATC Climb Rate to 3300



DME REQUIRED

EMERG SAFE ALT 100 NM 4800

DEPARTURE ROUTE DESCRIPTION

TAKE-OFF RWY 17C/R: Track 175° to END VORTAC 6 DME, cross END 6 DME at or above 3300, then turn right heading 230°, intercept IFI VORTAC R-345 to IFI.

TAKE-OFF RWY 35C/L: Track 355° to END VORTAC 6 DME, cross END 6 DME at or above 3300, then turn left heading 230°, intercept IFI VORTAC R-345 to IFI.

JAYHAWKE-TWO DEPARTURE (JHK 2•IFI)

ENID, OKLAHOMA
VANCE AFB (KEND)

SC-1, 07 FEB 2013 to 07 MAR 2013

SC-1, 07 FEB 2013 to 07 MAR 2013