

ILS or LOC Z RWY 35C

LOC I-END 110.1	APCH CRS 355°	Rwy Idg THRE 1293 Arpt Elev 1307
---------------------------	-------------------------	--

AL-135 [USAF]

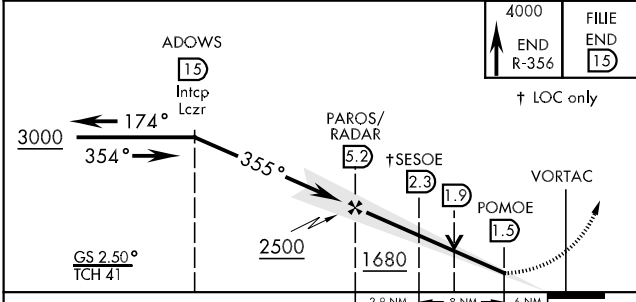
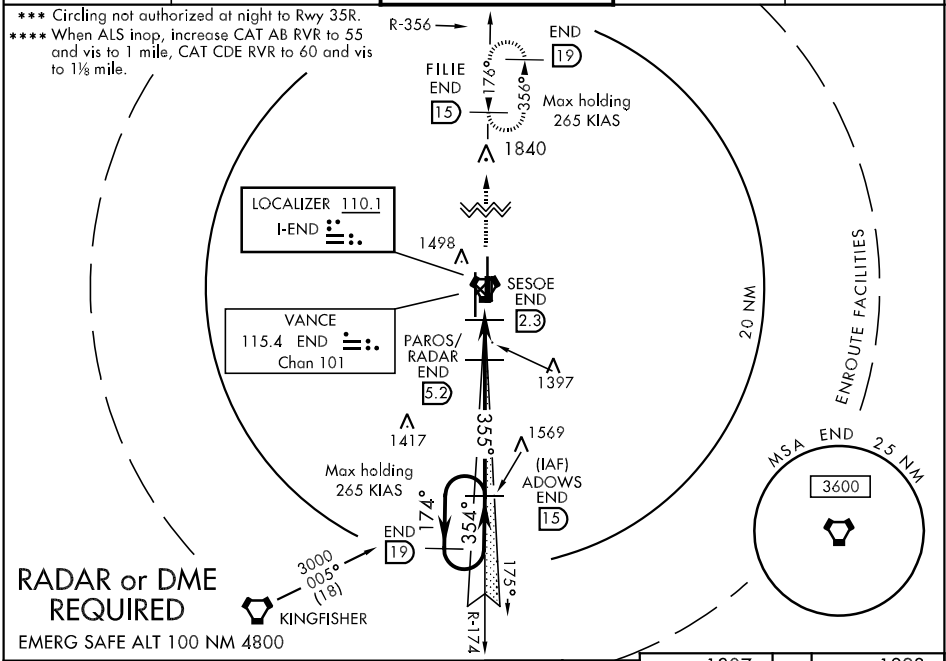
VANCE AFB (KEND)

▼ * When ALS inop, increase all CATs RVR to 40 and vis to ¾ mile.
 ** When ALS inop, increase CAT AB RVR to 55 and vis to 1 mile, CAT CDE RVR to 50 and vis to 1 mile.

SALSF

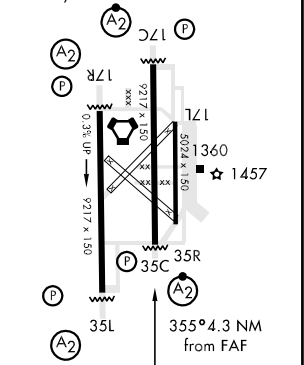

MISSED APPROACH: Climb to 4000, intercept END VORTAC R-356 to FILIE and hold.

ATIS ★ 115.4 263.15	VANCE APP CON E125.45 388.2 W126.75 346.325	VANCE TOWER ★ 124.05 259.1	GND CON 121.8 289.4	CLNC DEL 225.4
-------------------------------	---	--------------------------------------	-------------------------------	--------------------------



ELEV 1307	THRE 1293
-----------	-----------

HIRL Rwy 17C-35C, 17R-35L
 MIRL Rwy 17L-35R
 REIL Rwy 17L



CATEGORY	A	B	C	D	E
S-ILS 35C *	1493/26		200	(200-½)	
S-LOC 35C **	1620/40	327 (400-¾)	1620/35		327 (400-¾)
CIRCLING ***	1760-1	453 (500-1)	1760-1½ 453 (500-1½)	1860-2 553 (600-2)	2300-3 993 (1000-3)
WITHOUT DME MINIMUMS					
S-LOC 35C ****	1680/40	387 (400-¾)	1680/45		387 (400-¾)

FAF to MAP 3.7 NM					
Knots	60	90	120	150	180
Min:Sec	3:42	2:28	1:51	1:29	1:14

ILS or LOC Z RWY 35C

SC-1, 07 FEB 2013 to 07 MAR 2013

SC-1, 07 FEB 2013 to 07 MAR 2013