

ENID, OKLAHOMA


ILS or LOC Z RWY 17C

LOC I-LVC 108.9	APCH CRS 175°	Rwy Idg 9217
		THRE 1276
		Arpt Elev 1307

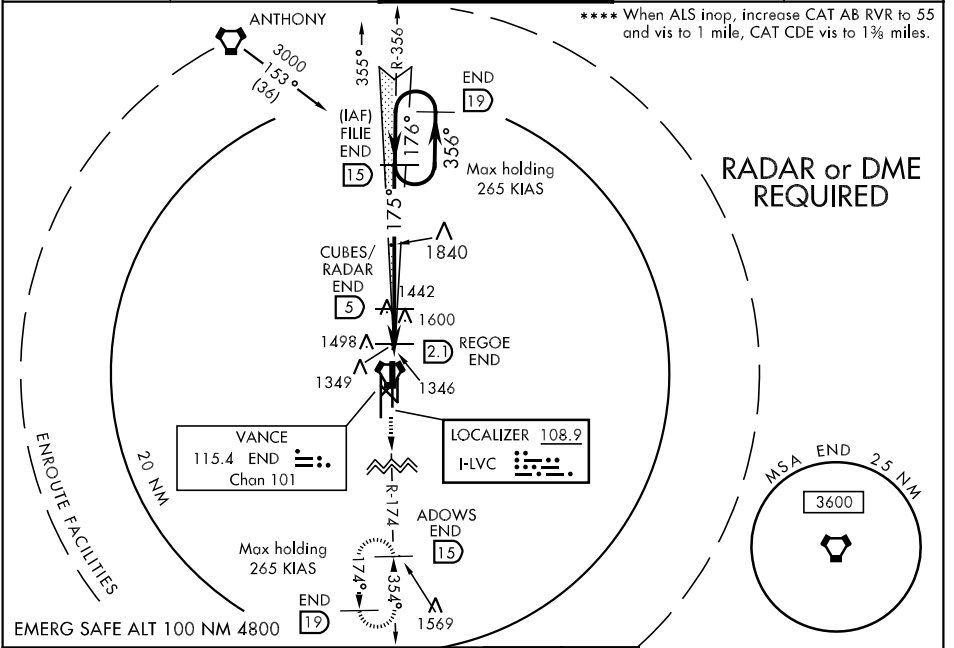
AL-135 [USAF]

VANCE AFB (KEND)

▼ * When ALS inop, increase all CATs RVR to 40 and vis to 3/4 mile.
 ** When ALS inop, increase all CATs RVR to 55 and vis to 1 mile.
 *** Circling not authorized at night to Rwy 35R.

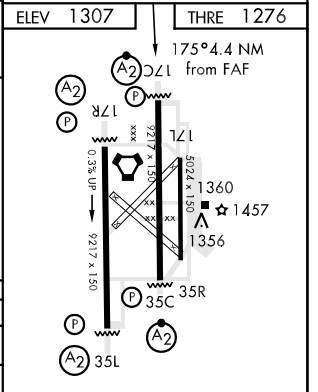
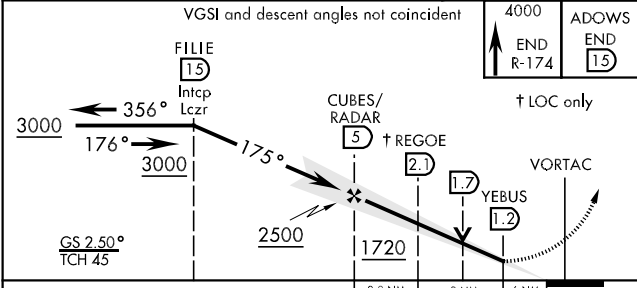
SALSF
 MISSED APPROACH: Climb to 4000, intercept
 END VORTAC R-174 to ADOWS and hold.

ATIS ★ 115.4 263.15	VANCE APP CON E125.45 388.2 W126.75 346.325	VANCE TOWER ★ 124.05 259.1	GND CON 121.8 289.4	CLNC DEL 225.4
-------------------------------	---	--------------------------------------	-------------------------------	--------------------------



SC-1, 07 FEB 2013 to 07 MAR 2013

SC-1, 07 FEB 2013 to 07 MAR 2013



CATEGORY	A	B	C	D	E
S-ILS 17C *		1476/26	200 (200-1/2)		
S-LOC 17C **		1620/40	344 (400-3/4)		
CIRCLING ***	1760-1 453 (500-1)	1760-1 1/2 453 (500-1 1/2)	1860-2 553 (600-2)	2300-3 993 (1000-3)	
WITHOUT DME MINIMUMS					
S-LOC 17C ****	1720/40 444 (500-3/4)		1720/55 444 (500-1)		

HRL Rwy 17C-35C, 17R-35L
 MRL Rwy 17L-35R
 REL Rwy 17L

FAF to MAP 3.8 NM					
Knots	60	90	120	150	180
Min:Sec	3:48	2:32	1:54	1:31	1:16

ENID, OKLAHOMA
 Amdt 3 20SEP12

36°20'N-97°55'W

VANCE AFB (KEND)

ILS or LOC Z RWY 17C