

ENID, OKLAHOMA

# ILS or LOC Y RWY 35C

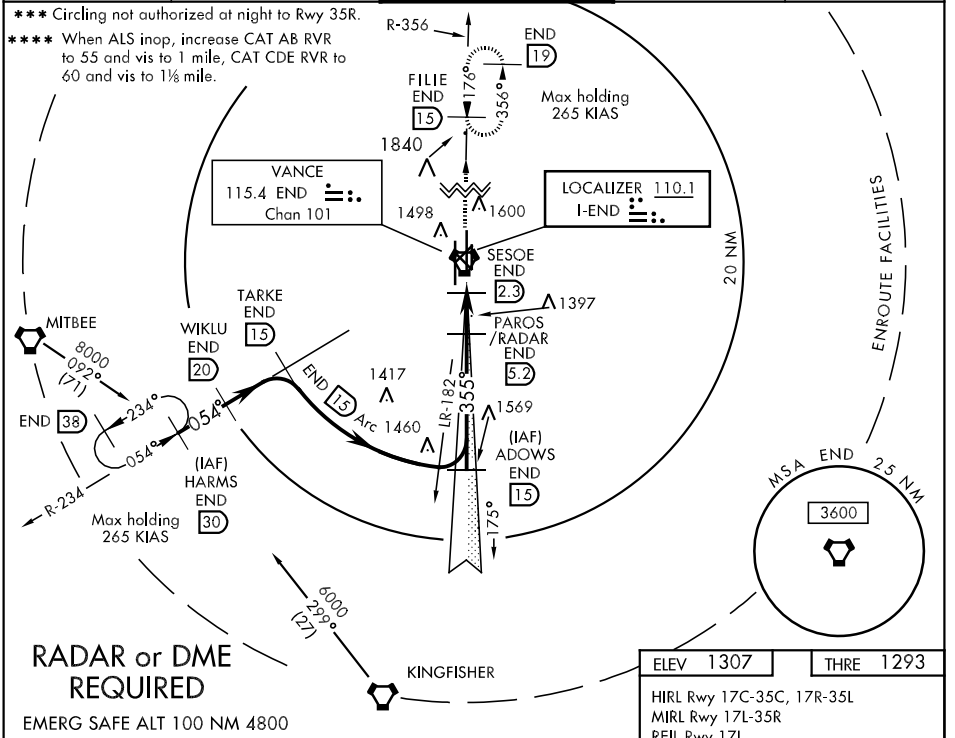
LOC I-END <b>110.1</b>	APCH CRS <b>355°</b>	Rwy Idg THRE Arpt Elev <b>9217</b> <b>1293</b> <b>1307</b>	AL-135 [USAF]	VANCE AFB (KEND)
---------------------------	-------------------------	---	---------------	------------------

**▽** \* When ALS inop, increase all CATs RVR to 40 and vis to 3/4 mile.  
**\*\*** When ALS inop, increase CAT AB RVR to 55 and vis to 1 mile, CAT CDE RVR to 50 and vis to 1 mile.

**SALSF**  
**(A2)**

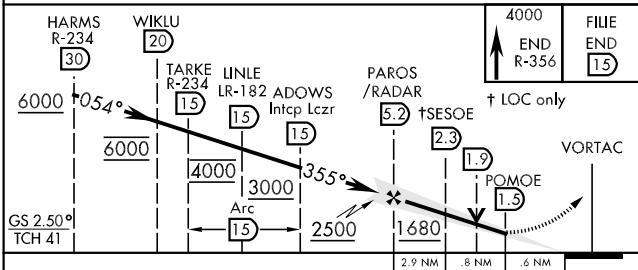
**MISSED APPROACH:** Climb to 4000 intercept END VORTAC R-356 to FILE and hold.

<b>ATIS *</b> <b>115.4 263.15</b>	<b>VANCE APP CON</b> <b>E125.45 388.2</b> <b>W126.75 346.325</b>	<b>VANCE TOWER *</b> <b>124.05 259.1</b>	<b>GND CON</b> <b>121.8 289.4</b>	<b>CLNC DEL</b> <b>225.4</b>
--------------------------------------	--	---	--------------------------------------	---------------------------------

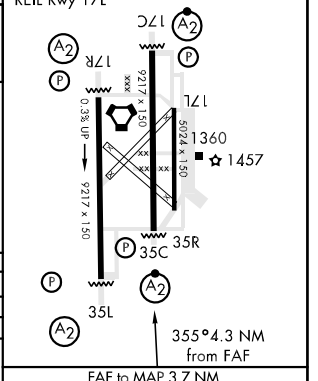


SC-1, 07 FEB 2013 to 07 MAR 2013

SC-1, 07 FEB 2013 to 07 MAR 2013



ELEV 1307	THRE 1293
HIRL Rwy 17C-35C, 17R-35L	
MIRL Rwy 17L-35R	
REIL Rwy 17L	



CATEGORY	A	B	C	D	E
S-ILS 35C*		1493/26	200 (200-1/2)		
S-LOC 35C**	1620/40	327 (400-3/4)	1620/35	327 (400-3/4)	
CIRCLING***	1760-1		1760-1 1/2	1860-2	2300-3
	453 (500-1)		453 (500-1 1/2)	553 (600-2)	993 (1000-3)
WITHOUT DME MINIMUMS					
S-LOC 35C****	1680/40	387 (400-3/4)	1680/45	387 (400-7/8)	

FAF to MAP 3.7 NM					
Knots	60	90	120	150	180
Min:Sec	3:42	2:28	1:51	1:29	1:14

ENID, OKLAHOMA  
Amdt 3 26JUL12

36°20'N-97°55'W

VANCE AFB (KEND)

# ILS or LOC Y RWY 35C