

# ILS or LOC Y RWY 17C

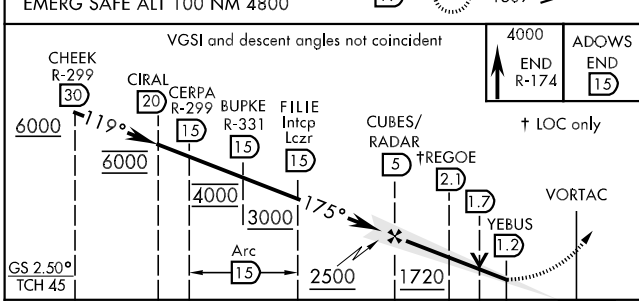
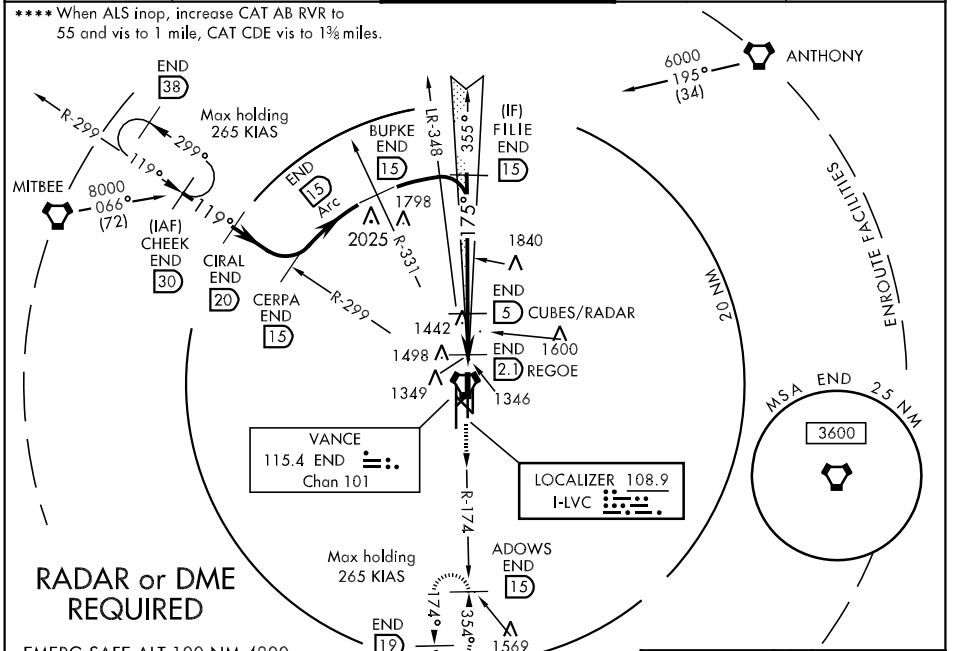
LOC I-LVC <b>108.9</b>	APCH CRS <b>175°</b>	Rwy Idg THRE <b>1276</b> Arpt Elev <b>1307</b>	AL-135 [USAF]	VANCE AFB (KEND)
---------------------------	-------------------------	--	---------------	------------------

▼ \* When ALS inop, increase all CATs RVR to 40 and vis to 3/4 mile.  
 \*\* When ALS inop, increase all CATs RVR to 55 and vis to 1 mile.  
 \*\*\* Circling not authorized at night to Rwy 35R.

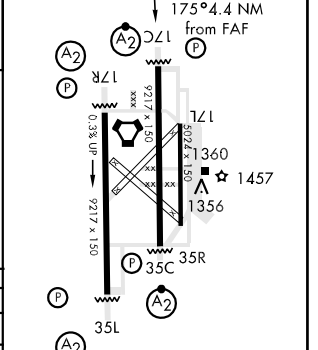
SALSF  

 MISSED APPROACH: Climb to 4000, intercept END VORTAC R-174 to ADOWS and hold.

ATIS ★ <b>115.4 263.15</b>	VANCE APP CON <b>E125.45 388.2</b> <b>W126.75 346.325</b>	VANCE TOWER ★ <b>124.05 259.1</b>	GND CON <b>121.8 289.4</b>	CLNC DEL <b>225.4</b>
-------------------------------	---	--------------------------------------	-------------------------------	--------------------------



ELEV 1307	THRE 1276
-----------	-----------



CATEGORY	A	B	C	D	E
S-ILS 17C *		1476/26	200 (200-1/2)		
S-LOC 17C **		1620/40	344 (400-3/4)		
CIRCLING ***	1760-1	453 (500-1)	1760-1 1/2 453 (500-1 1/2)	1860-2 553 (600-2)	2300-3 993 (1000-3)
WITHOUT DME MINIMUMS					
S-LOC 17C ****	1720/40	444 (500-3/4)	1720/55	444 (500-1)	

HIRL Rwy 17C-35C, 17R-35L  
MIRL Rwy 17L-35R  
REIL Rwy 17L

FAF to MAP 3.8 NM					
Knots	60	90	120	150	180
Min:Sec	3:48	2:32	1:54	1:31	1:16

# ILS or LOC Y RWY 17C

SC-1, 07 FEB 2013 to 07 MAR 2013

SC-1, 07 FEB 2013 to 07 MAR 2013