

ANTHONY-TWO DEPARTURE (ANY 2•ANY)

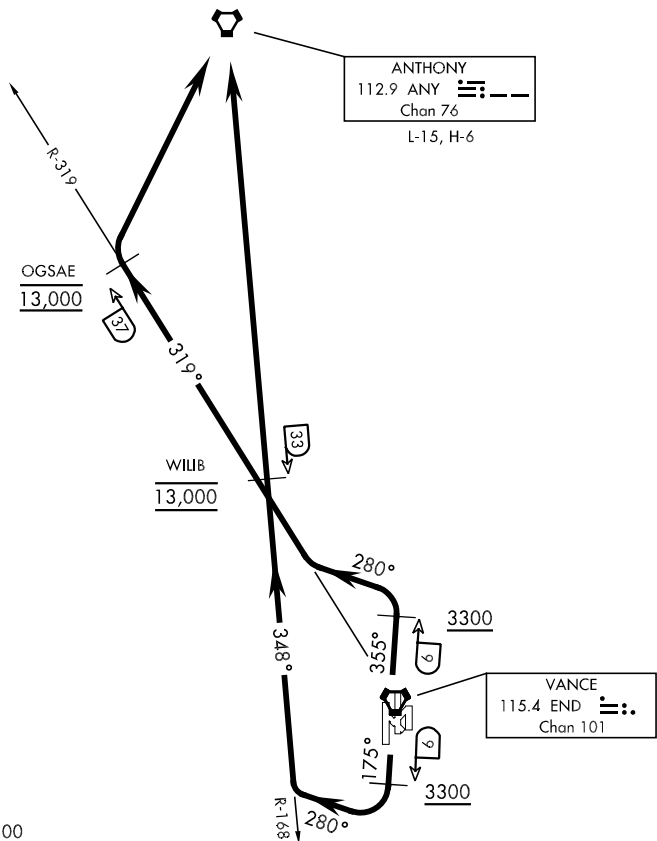
SL-135 [USAF]

ENID, OKLAHOMA

ATIS★115.4 263.15
 CLNC DEL
 225.4
 GND CON
 121.8 289.4
 VANCE TOWER★
 124.05 259.1
 VANCE DEP CON
 120.525 306.3
 KANSAS CITY CENTER
 127.8 319.1

Rwy	Knots	60	120	180	240
35L	V/V(fpm)	360	710	1060	1420
35C	V/V(fpm)	380	760	1140	1510
17R	V/V(fpm)	430	850	1270	1690
17C	V/V(fpm)	400	790	1180	1580

ATC Climb Rate to 13,000



DME REQUIRED

EMERG SAFE ALT 100 NM 4800

DEPARTURE ROUTE DESCRIPTION

TAKE-OFF RWY 17C/R: Track 175° to END VORTAC 6 DME, cross END 6 DME at or above 3300, then turn right heading 280°. Intercept ANY VORTAC R-168 to ANY. Cross WILIB (ANY R-168/33 DME) at 13,000.

TAKE-OFF RWY 35C/L: Track 355° to END VORTAC 6 DME, cross END 6 DME at or above 3300, then turn left heading 280°. Intercept END R-319 to OGSAE (END R-319/37 DME), then direct ANY VORTAC. Cross OGSAE at 13,000.

ANTHONY-TWO DEPARTURE (ANY 2•ANY)

SC-1, 07 FEB 2013 to 07 MAR 2013

SC-1, 07 FEB 2013 to 07 MAR 2013