

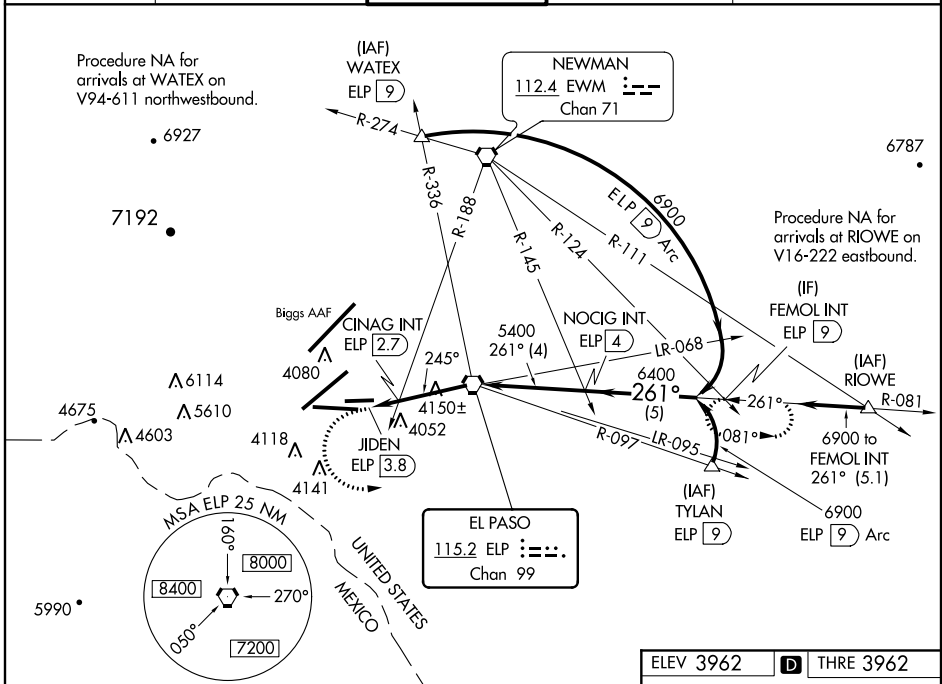
VORTAC ELP 115.2 Chan 99	APP CRS 245°	Rwy Idg THRE Apt Elev 9025 3962 3962
--	------------------------	--

VOR RWY 26L

EL PASO INTL (ELP)

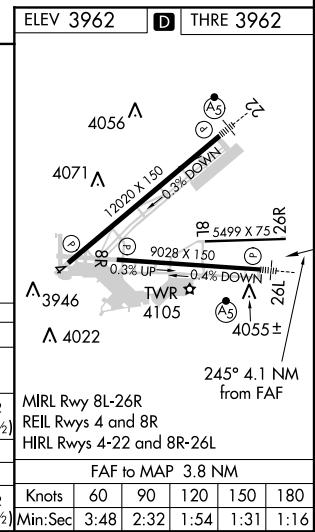
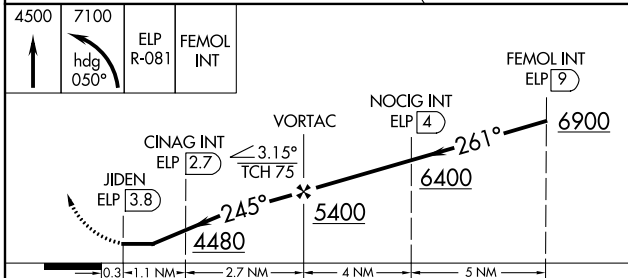
ASR Circling NA for Cat E west of Rwy 4-22. DME required.	MALSRL 	MISSED APPROACH: Climb to 4500 then climbing left turn to 7100 on heading 050° and on ELP VORTAC R-081 to FEMOL INT/9 DME and hold.
▲ Inoperative table does not apply.		

ATIS 120.0 254.3	EL PASO APP CON 124.25 298.85	EL PASO TOWER 118.3 239.275	GND CON 121.9 348.6	CLNC DEL 125.0 379.1
----------------------------	---	---------------------------------------	-------------------------------	--------------------------------



SC-3, 07 FEB 2013 to 07 MAR 2013

SC-3, 07 FEB 2013 to 07 MAR 2013



CATEGORY	A	B	C	D	E
S-26L	4480-1	518 (600-1)	4480-1 $\frac{1}{8}$	518 (600-1 $\frac{1}{8}$)	
CIRCLING	4480-1	518 (600-1)	4480-1 $\frac{1}{2}$	4520-2	4660-2 $\frac{1}{2}$
CINAG FIX MINIMUMS (DUAL VOR RECEIVERS OR DME REQUIRED)					
S-26L	4340-1 378 (400-1)				
CIRCLING	4420-1	4460-1	4460-1 $\frac{1}{2}$	4520-2	4660-2 $\frac{1}{2}$
	458 (500-1)	498 (500-1)	498 (500-1 $\frac{1}{2}$)	558 (600-2)	698 (700-2 $\frac{1}{2}$)