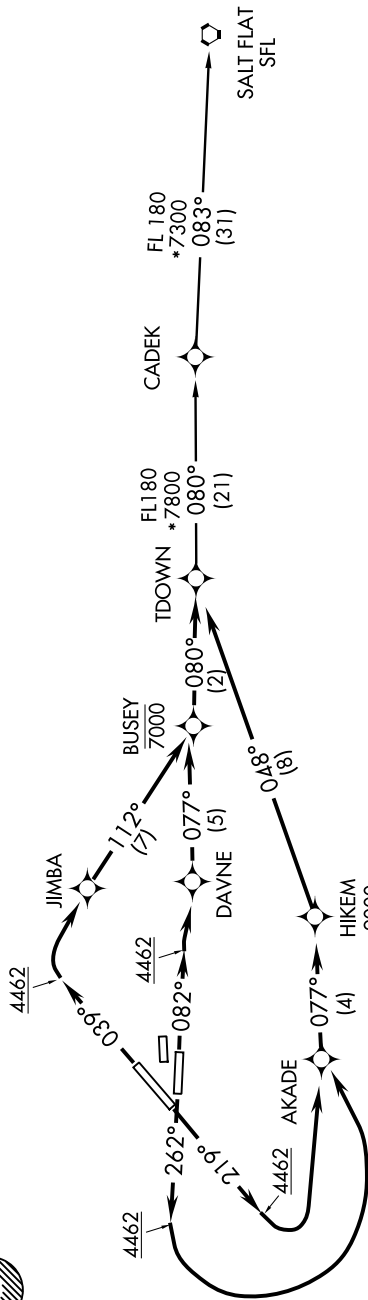
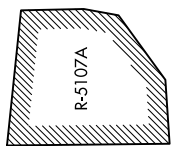


ATIS
120.0 254.3
CLINC DEL
125.0 379.1
GND CON
121.9 348.6
EL PASO TOWER
118.3 239.275
EL PASO DEP CON
119.15 263.0
ABO CENTER
135.87 292.15



NOTE: DME/DME/IRU or GPS required.
NOTE: RNAV 1.
NOTE: For Turbojet aircraft only.
NOTE: RADAR required.

TAKEOFF MINIMUMS:

Rwys 8L, 26R: NA-Environmental
Rwys 4, 8R: Standard with a minimum climb of 500' per NM to 4462.
Rwys 22, 26L: Standard with a minimum climb of 500' per NM to 9000.

(NARRATIVE ON FOLLOWING PAGE)

NOTE: Chart not to scale.