

# SAMMR TWO ARRIVAL (RNAV)

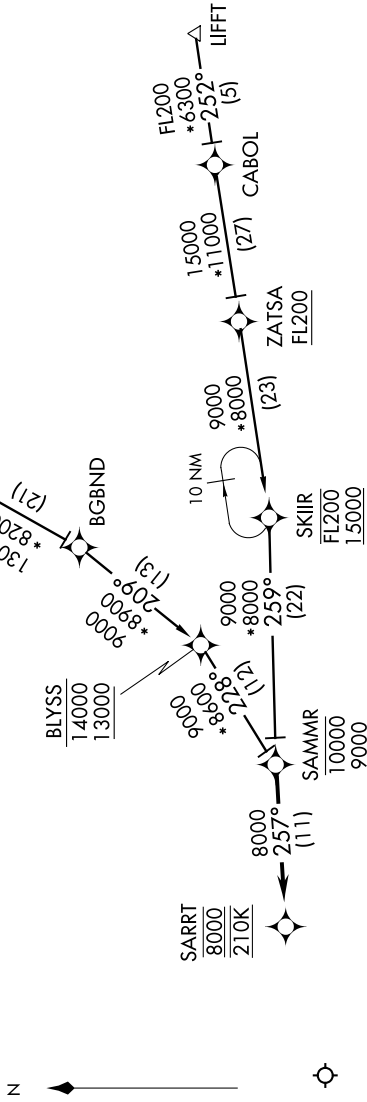
SC-3, 07 FEB 2013 to 07 MAR 2013

CHISUM TRANSITION (CME.SAMMR2)  
LIFFT TRANSITION (LIFFT.SAMMR2)

From SAMMR on track 257° to SARRT, cross SARRT at 8000 at 210 KTS, expect RNAV (RNP) approach.

- NOTE: RNAV 1.
- NOTE: RADAR required.
- NOTE: DME/DME/IRU or GPS required.
- NOTE: For TURBOJET aircraft only.
- NOTE: For Non-RNP aircraft, expect radar vectors to final approach course.

EL PASO ATIS  
120.0 254.3  
EL PASO APP CON  
124.25 298.85  
ABQ ARTCC  
135.87 292.15



NOTE: Chart not to scale.

SC-3, 07 FEB 2013 to 07 MAR 2013

# SAMMR TWO ARRIVAL (RNAV)