

APP CRS 219°	Rwy Idg 12020
	TDZE 3949
	Apt Elev 3962

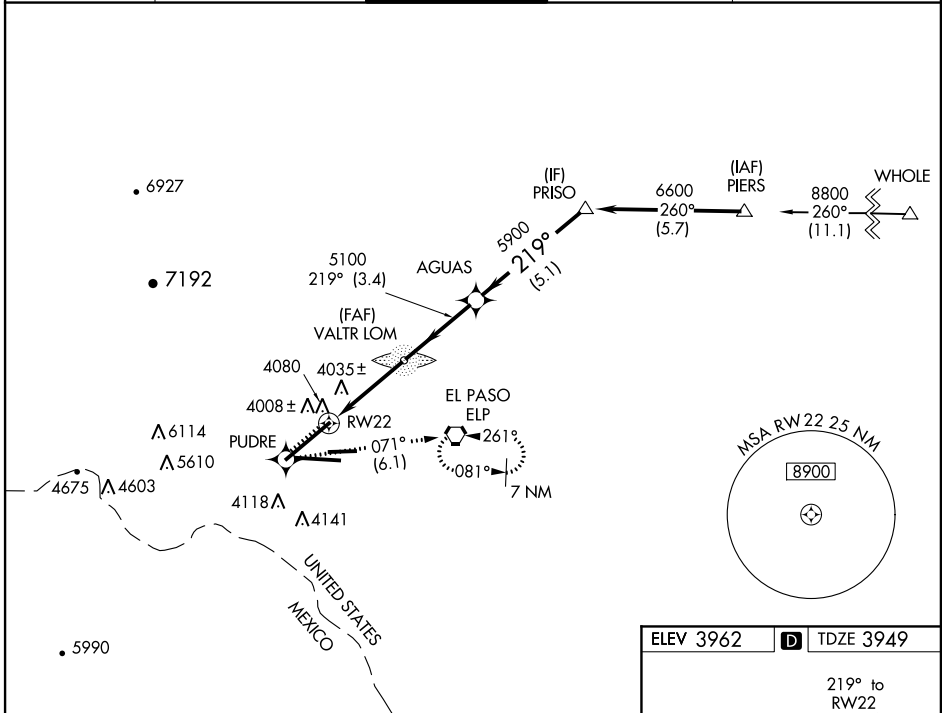
RNAV (GPS) Y RWY 22

EL PASO INTL (ELP)

ASR For uncompensated Baro-VNAV systems, LNAV/VNAV NA below -22°C (-7°F) or above 40°C (104°F). For inoperative MALSRs increase LNAV/VNAV Cat D visibility to RVR 5000 and LNAV Cat D visibility to RVR 6000. DME/DME RNP-0.3 NA.

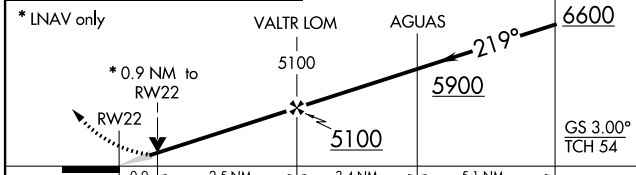
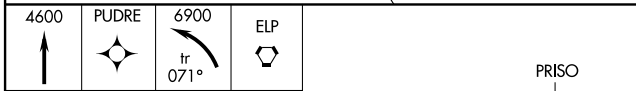
MALSR MISSED APPROACH: Climb to 4600 direct PUDRE and climbing left turn to 6900 on track 071° to ELP VORTAC and hold.

ATIS 120.0 254.3	EL PASO APP CON 124.25 298.85	EL PASO TOWER 118.3 239.275	GND CON 121.9 348.6	CLNC DEL 125.0 379.1
----------------------------	---	---------------------------------------	-------------------------------	--------------------------------

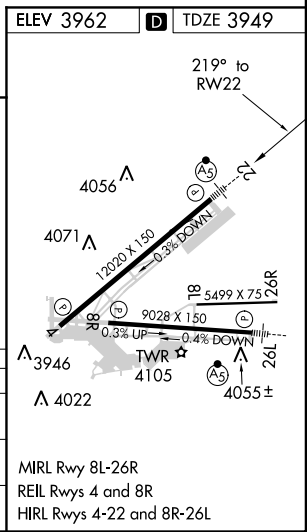


SC-3, 07 FEB 2013 to 07 MAR 2013

SC-3, 07 FEB 2013 to 07 MAR 2013



CATEGORY	A	B	C	D
LNAV/VNAV DA	4273/24	324 (400-½)		4273/40 324 (400-¾)
LNAV MDA	4300/24	351 (400-½)		4300/50 351 (400-1)
CIRCLING	4420-1	458 (500-1)	4420-1½ 458 (500-1½)	4520-2 558 (600-2)



MIRL Rwy 8L-26R
REIL Rwy 4 and 8R
HIRL Rwy 4-22 and 8R-26L