

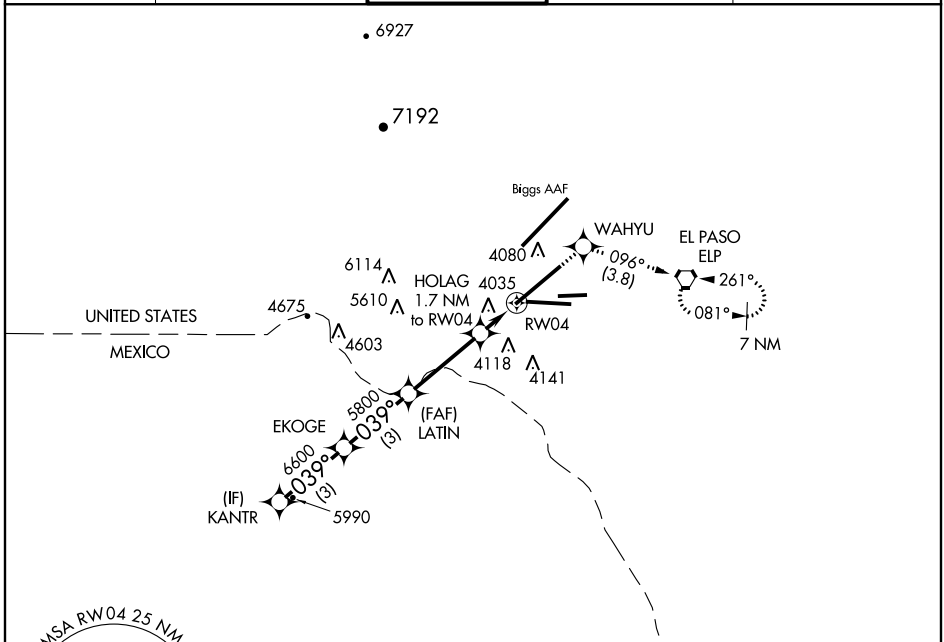
RNAV (GPS) X RWY 4

EL PASO INTL (ELP)

APP CRS 039°	Rwy Idg THRE	12020
	Apt Elev	3917
		3962

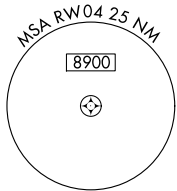
ASR DME/DME RNP-0.3 NA. MISSED APPROACH: Climb to 6900 direct WAHYU and on track 096° to EL PASO VORTAC and hold, continue climb-in-hold to 6900.

ATIS 120.0 254.3	EL PASO APP CON 124.25 298.85	EL PASO TOWER 118.3 239.275	GND CON 121.9 348.6	CLNC DEL 125.0 379.1
----------------------------	---	---------------------------------------	-------------------------------	--------------------------------

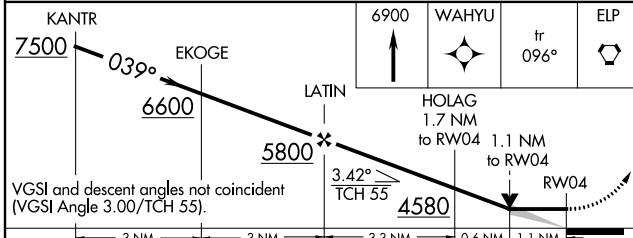


SC-3, 07 FEB 2013 to 07 MAR 2013

SC-3, 07 FEB 2013 to 07 MAR 2013



RADAR REQUIRED



CATEGORY	A	B	C	D
LNVA MDA	4320/55	403 (400-1¼)	4320/60	403 (400-1¼)
CIRCLING	4420-1 458 (500-1)	4460-1 498 (500-1)	4460-1½ 498 (500-1½)	4520-2 558 (600-2)

