

APP CRS	Rwy Idg	12020
039°	THRE	3917
	Apt Elev	3962

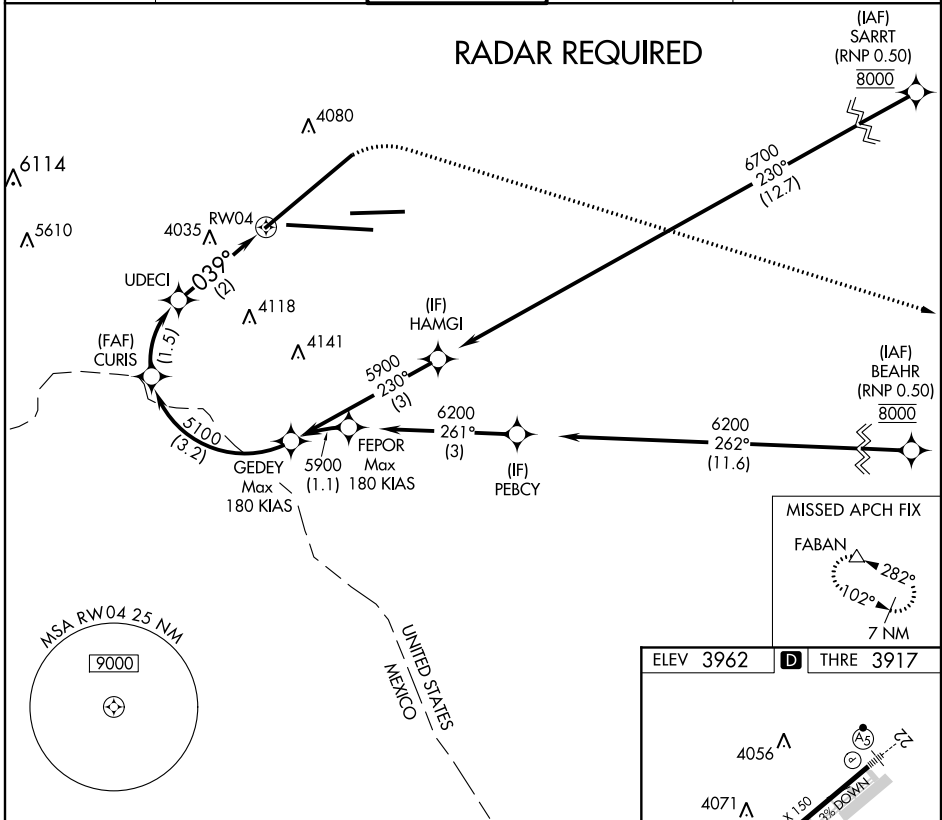
RNAV (RNP) Z RWY 4

EL PASO INTL (ELP)

RF required. GPS required. For uncompensated Baro-VNAV systems, procedure NA below -6°C (22°F) or above 50°C (122°F).

MISSED APPROACH: Climb to 4400 then climbing right turn to 7500 direct FABAN and hold.

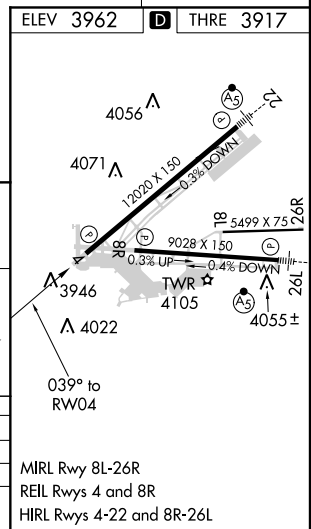
ATIS 120.0 254.3	EL PASO APP CON 124.25 298.85	EL PASO TOWER 118.3 239.275	GND CON 121.9 348.6	CLNC DEL 125.0 379.1
----------------------------	---	---------------------------------------	-------------------------------	--------------------------------



See planview for multiple IF locations.

GEDEY	4400	7500	FABAN	
5900	5100	4618	RW04	
GP 3.00° TCH 55	5100	039°		
	3.2 NM	1.5 NM	2 NM	
CATEGORY	A	B	C	D
RNP 0.20 DA	4167/40		250 (300-3/4)	
RNP 0.30 DA	4302-1 1/4		385 (400-1 1/4)	

AUTHORIZATION REQUIRED



SC-3, 07 FEB 2013 to 07 MAR 2013

SC-3, 07 FEB 2013 to 07 MAR 2013