

# RNAV (RNP) Z RWY 26L

EL PASO INTL (ELP)

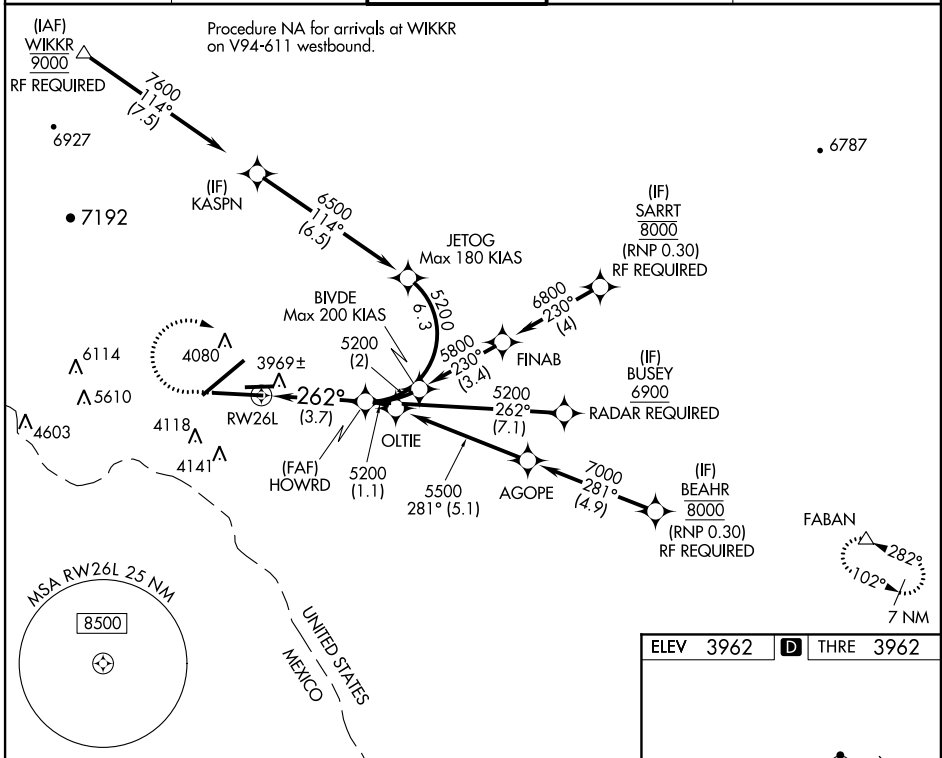
APP CRS <b>262°</b>	Rwy Idg <b>9025</b>
	THRE <b>3962</b>
	Apt Elev <b>3962</b>

**V** GPS Required. For inoperative MALSR, increase RNP 0.30 all Cnts visibility to 1. For uncompensated Baro-VNAV systems, procedure NA below -7°C (20°F) or above 40°C (104°F).



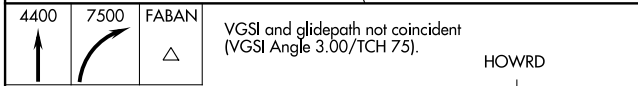
**MISSED APPROACH:** Climb to 4400, then climbing right turn to 7500 direct FABAN and hold.

ATIS <b>120.0 254.3</b>	EL PASO APP CON <b>124.25 298.85</b>	<b>EL PASO TOWER</b> <b>118.3 239.275</b>	GND CON <b>121.9 348.6</b>	CINC DEL <b>125.0 379.1</b>
----------------------------	---	--	-------------------------------	--------------------------------



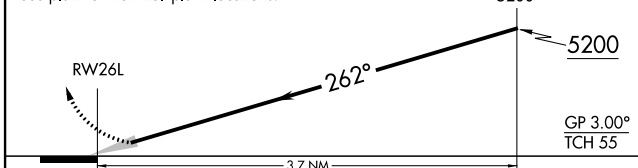
SC-3, 07 FEB 2013 to 07 MAR 2013

SC-3, 07 FEB 2013 to 07 MAR 2013



VGSI and glidepath not coincident (VGSI Angle 3.00/TCH 75).

See planview for multiple IF locations.



CATEGORY	A	B	C	D
RNP 0.30 DA		4275-3/4	313 (400-3/4)	

**AUTHORIZATION REQUIRED**

