


APP CRS	Rwy Idg	<b>12020</b>
<b>219°</b>	THRE	<b>3949</b>
	Apt Elev	<b>3962</b>

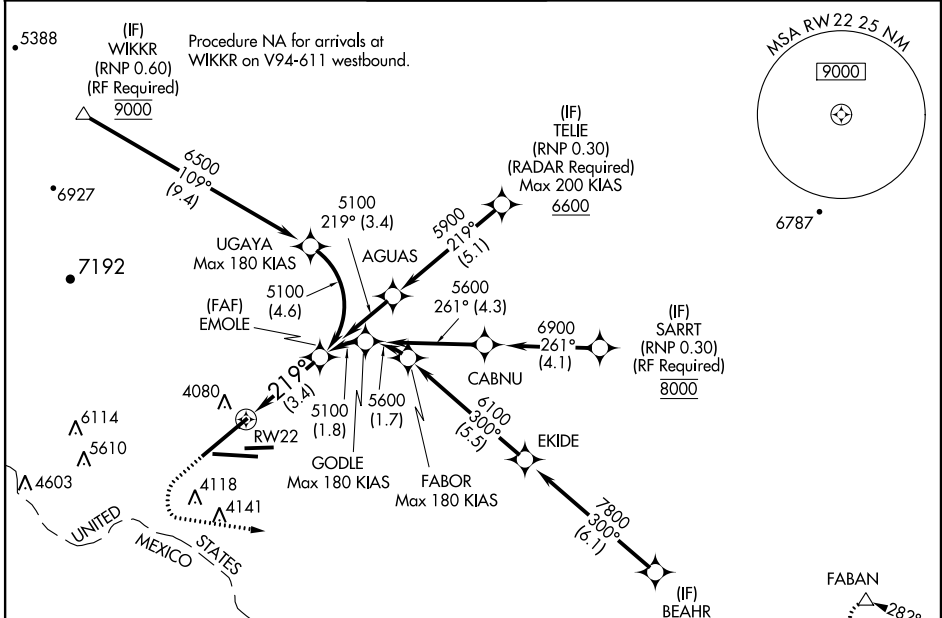
# RNAV (RNP) Z RWY 22

EL PASO INTL (ELP)

**▽** For uncompensated Baro-VNAV systems, procedure NA below -7°C (20°F) or above 40°C (104°F). GPS required. For inoperative MALSR, increase RNP 0.10 all Cts visibility to RVR 4000 and RNP 0.30 all Cts visibility to 5000.

**MALSR**  
  
**MISSED APPROACH:** Climb to 4400, then climbing left turn to 7500 direct FABAN and hold.

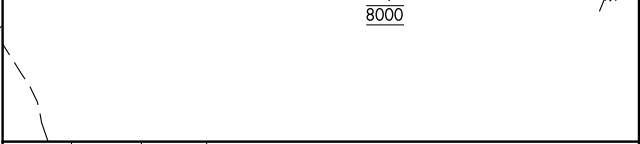
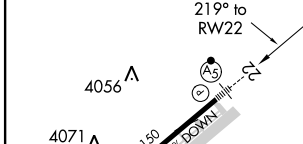
<b>ATIS</b> 120.0 254.3	<b>EL PASO APP CON</b> 124.25 298.85	<b>EL PASO TOWER</b> 118.3 239.275	<b>GND CON</b> 121.9 348.6	<b>CLNC DEL</b> 125.0 379.1
----------------------------	---	---------------------------------------	-------------------------------	--------------------------------



SC-3, 07 FEB 2013 to 07 MAR 2013

SC-3, 07 FEB 2013 to 07 MAR 2013

ELEV	3962	<b>D</b>	THRE	3949
------	------	----------	------	------



VGSi and RNAV glidepath not coincident (VGSi Angle 3.00/TCH 70).

See planview for multiple IF locations.

3.4 NM

CATEGORY	A	B	C	D
RNP 0.10 DA		4202/24	253 (300-1/2)	
RNP 0.30 DA		4272/32	323 (400-5/8)	

MIRL Rwy 8L-26R  
 REIL Rws 4 and 8R  
 HIRL Rws 4-22 and 8R-26L

## AUTHORIZATION REQUIRED