

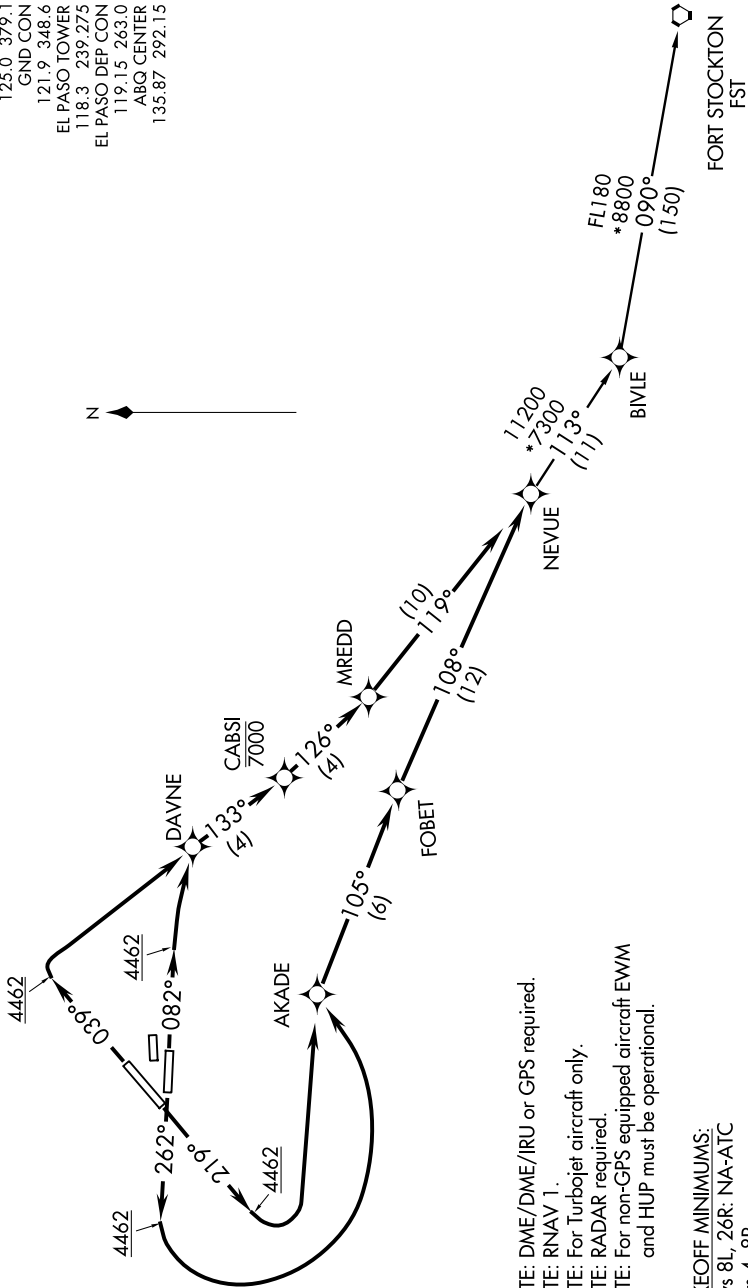
(NEVUE1.NEVUE) 12040

NEVUE ONE DEPARTURE (RNAV)

SL-134 (FAA)

EL PASO INTL (ELP)
EL PASO, TEXAS

ATIS 120.0 254.3
 CLINC DEL 125.0 379.1
 GND CON 121.9 348.6
 EL PASO TOWER 118.3 239.275
 EL PASO DEP CON 119.15 263.0
 ABQ CENTER 135.87 292.15



NOTE: DME/DME/IRU or GPS required.

NOTE: RNAV 1.

NOTE: For Turbojet aircraft only.

NOTE: RADAR required.

NOTE: For non-GPS equipped aircraft EWM and HUP must be operational.

TAKEOFF MINIMUMS:

Rwys 8L, 26R: NA-ATC

Rwys 4, 8R

22, 26L: Standard with a minimum climb of 500' per NM to 4462.

NOTE: Chart not to scale.

(NARRATIVE ON FOLLOWING PAGE)

NEVUE ONE DEPARTURE (RNAV)
(NEVUE1.NEVUE) 12040

EL PASO, TEXAS
EL PASO INTL (ELP)