

LOC/DME I-ETF 111.5 Chan 52	APP CRS 039°	Rwy Idg 12020 TDZE 3923 Apt Elev 3959
---	------------------------	--

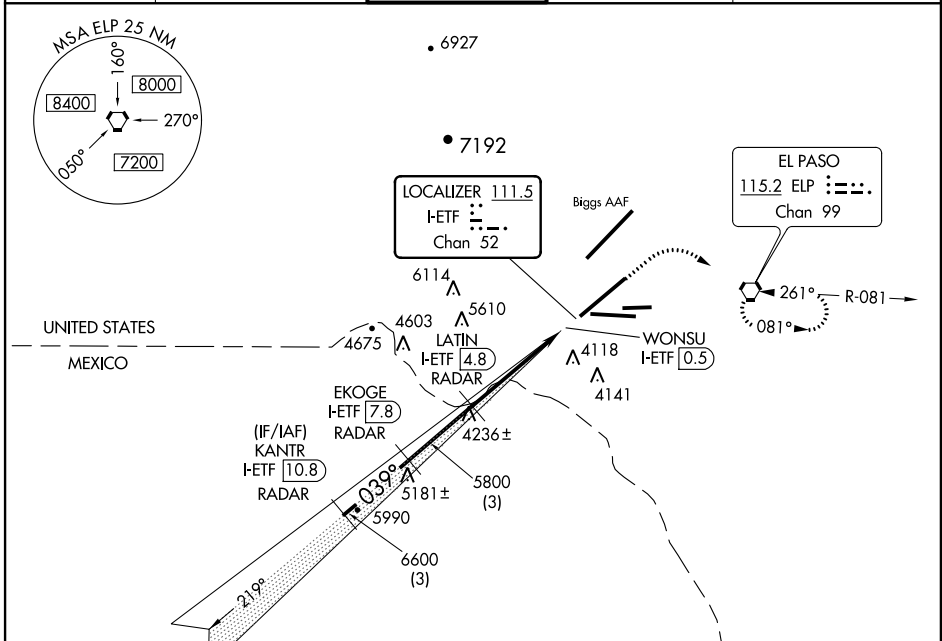
LOC/DME RWY 4

EL PASO INTL (ELP)

ASR When local altimeter setting not received, procedure NA.

MISSED APPROACH: Climb to 4500 then climbing right turn to 6900 direct ELP VORTAC and hold, continue climb-in-hold to 6900.

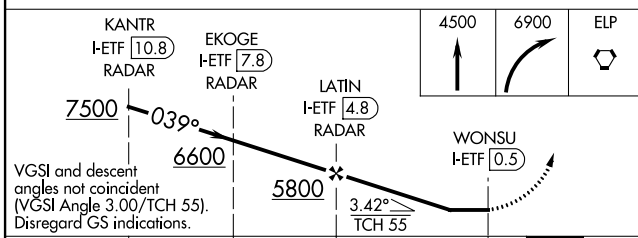
ATIS 120.0 254.3	EL PASO APP CON 124.25 298.85	EL PASO TOWER 118.3 239.275	GND CON 121.9 348.6	CLNC DEL 125.0 379.1
----------------------------	---	--	-------------------------------	--------------------------------



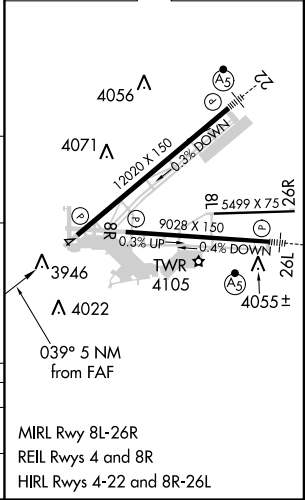
SC-3, 07 FEB 2013 to 07 MAR 2013

SC-3, 07 FEB 2013 to 07 MAR 2013

RADAR REQUIRED



ELEV 3959	D TDZE 3923
-----------	--------------------



CATEGORY	A	B	C	D
S-4	4300/50	377 (400-1)		4300/60 377 (400-1¼)
CIRCLING	4420-1 461 (500-1)	4460-1 501 (600-1)	4460-1½ 501 (600-1½)	4520-2 561 (600-2)