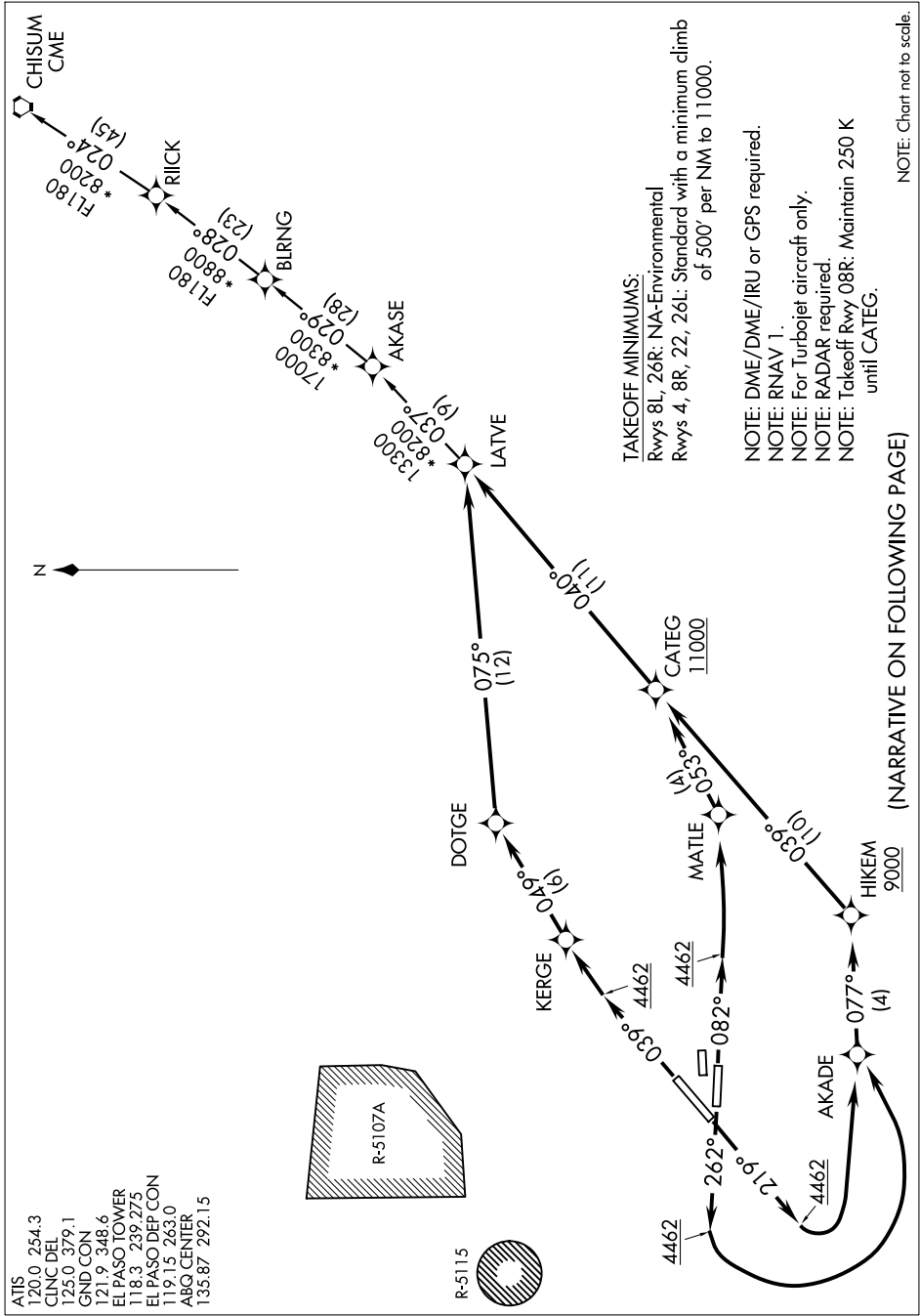


SC-3, 07 FEB 2013 to 07 MAR 2013



ATIS 120.0 254.3  
 CLNC DEL 125.0 379.1  
 GND CON 121.9 348.6  
 EL PASO TOWER 118.3 239.275  
 EL PASO DEP CON 119.15 263.0  
 ABQ CENTER 135.87 292.15

**TAKEOFF MINIMUMS:**  
 Rwy 8L, 26R: NA-Environmental  
 Rwy 4, 8R, 22, 26L: Standard with a minimum climb  
 of 500' per NM to 11000.

NOTE: DME/DME/IRU or GPS required.  
 NOTE: RNAV 1.  
 NOTE: For Turbojet aircraft only.  
 NOTE: RADAR required.  
 NOTE: Takeoff Rwy 08R: Maintain 250 K  
 until CATEG.

(NARRATIVE ON FOLLOWING PAGE)

NOTE: Chart not to scale.