

HI-VOR/DME or TACAN RWY 26L

VORTAC ELP 115.2 Chan 99	APCH CRS 245°	Rwy Idg THRE Arpt Elev 9028 3962 3962
---------------------------------------	-------------------------	---

JAL-134 [USAF]

EL PASO INTL (KELP)

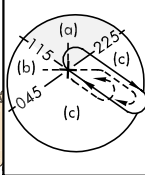
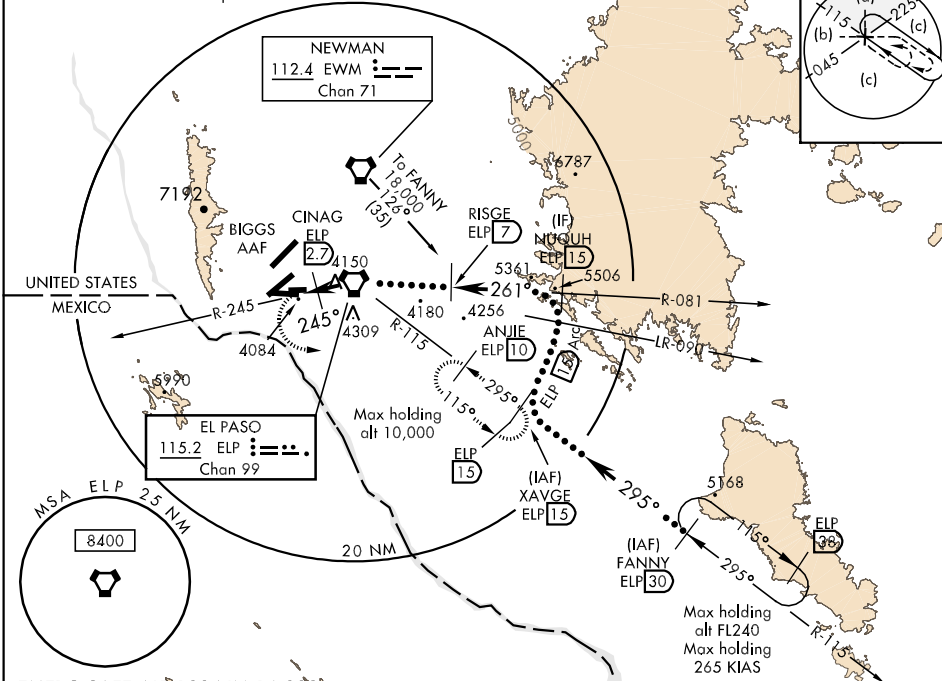
▼ Inoperative lighting table does not apply.
* Circling NA for CAT E W of RWY 22.



MISSED APPROACH: Climb to 4400, then climbing left turn to 7000 via heading 080° and ELP VORTAC R-115 to ANJIE/ELP 10 DME and hold, continue climb in hold to 7000.

ATIS 120.0 254.3	EL PASO APP CON S of V16 119.15 353.5 N of V16 124.25 298.85	EL PASO TOWER 118.3 239.275	GND CON 121.9 348.6	CLNC DEL 125.0 379.1	ASR
----------------------------	--	---------------------------------------	-------------------------------	--------------------------------	-----

CAUTION: Steeply rising terrain
4.5 NM NW of airport.
Procedure NA for arrival on EWM
VORTAC airway radials 079 CW 089.

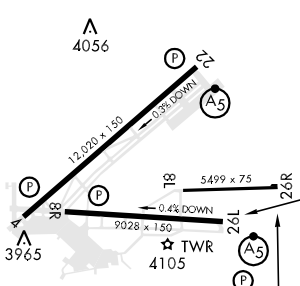
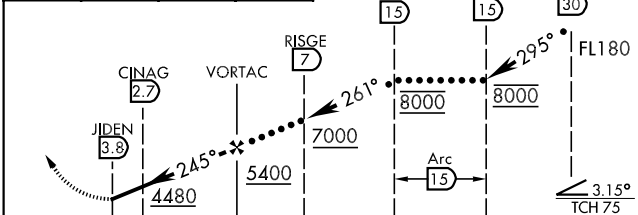


SC-3, 07 FEB 2013 to 07 MAR 2013

SC-3, 07 FEB 2013 to 07 MAR 2013

ELEV 3962	THRE 3962
-----------	-----------

4400	7000	ELP R-115	ANJIE ELP 10
------	------	-----------	--------------



CATEGORY	C	D	E
S-26L	4340-1	378 (400-1)	
CIRCLING *	4460-1½ 498 (600-1½)	4520-2 558 (600-2)	4660-2½ 698 (800-2½)

REIL Rwy 4, 8R
MIRL Rwy 8L-26R
HIRL Rwy 4-22 and 8R-26L