

FORT BLISS, TEXAS

VOR or TACAN RWY 21

EWM VORTAC 112.4 Chan 71	APCH CRS 210°	Rwy ldg 13,554 TDZE 3948 Arpt Elev 3948
--	-------------------------	--

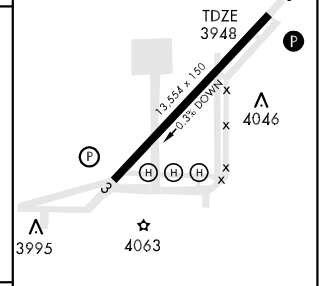
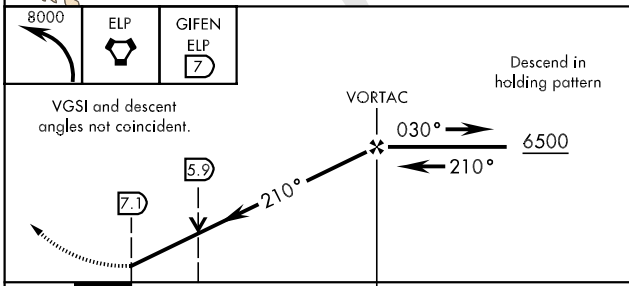
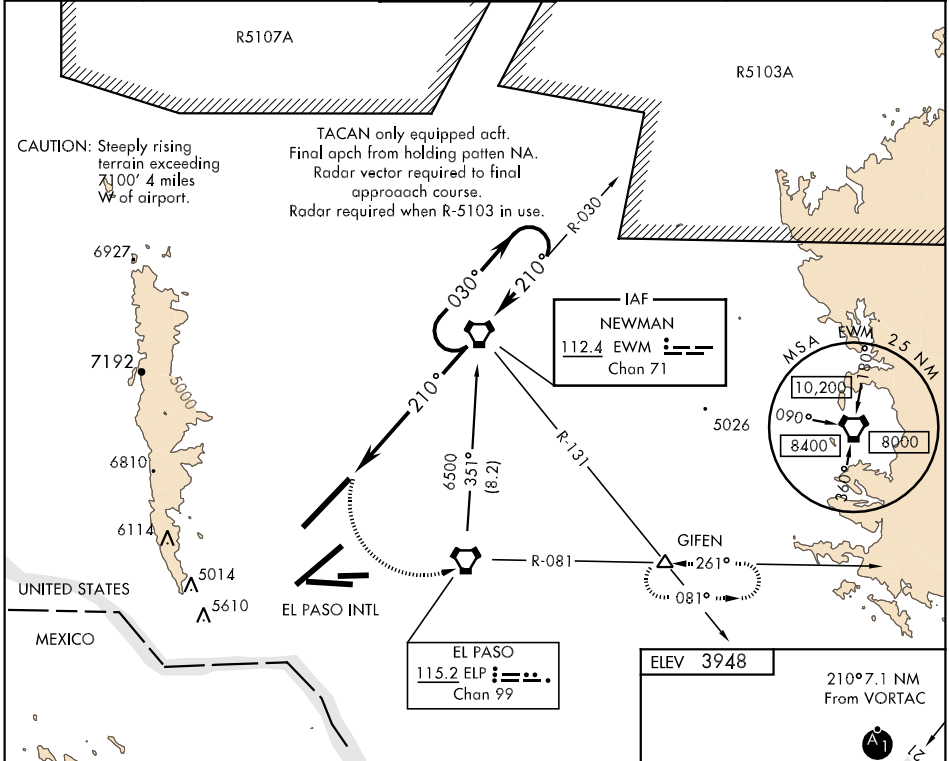
AL-133 [USA]

BIGGS AAF (KBIF)


ALSF-1  MISSED APPROACH: Climbing left turn to 8000 direct ELP VORTAC, then via ELP R-081 to GIFEN INT/ELP 7 DME and hold. Continue climb-in-hold to 8000.

* When ALS inop, increase CAT E vis to 1 3/4 miles.
 ** Circling Cat E NA W of Rwy 3-21.

ATIS 120.0 254.3	EL PASO APP CON S of V16 119.15 353.5 N of V16 124.25 298.85	BIGGS TOWER ★ 127.9 0 342.25	GND CON 121.6 237.6	EL PASO CLNC DEL 125.0 379.1	ASR
----------------------------	--	--	-------------------------------	--	-----



CATEGORY	A	B	C	D	E
S-21 *	4420-1/2 472 (500-1/2)		4420-3/4 472 (500-3/4)	4420-1 472 (500-1)	4420-1 1/4 472 (500-1 1/4)
CIRCLING **	4420-1 472 (500-1)		4420-1 1/2 472 (500-1 1/2)	4500-2 552 (600-2)	

HIRL Rwy 3-21 

FAF to MAP 7.1 NM

Knots	60	90	120	150	180
Min:Sec	7:06	4:44	3:33	2:50	2:22

FORT BLISS, TEXAS
Amdt 7 11237

31° 51' N-106° 23' W

BIGGS AAF (KBIF)

VOR or TACAN RWY 21

SC-3, 07 FEB 2013 to 07 MAR 2013

SC-3, 07 FEB 2013 to 07 MAR 2013