

FORT BLISS, TEXAS

RNAV (GPS) RWY 21

APCH CRS **212°**
 Rwy ldg **13,554**
 TDZE **3948**
 Arpt Elev **3948**

AL-133 [USA]

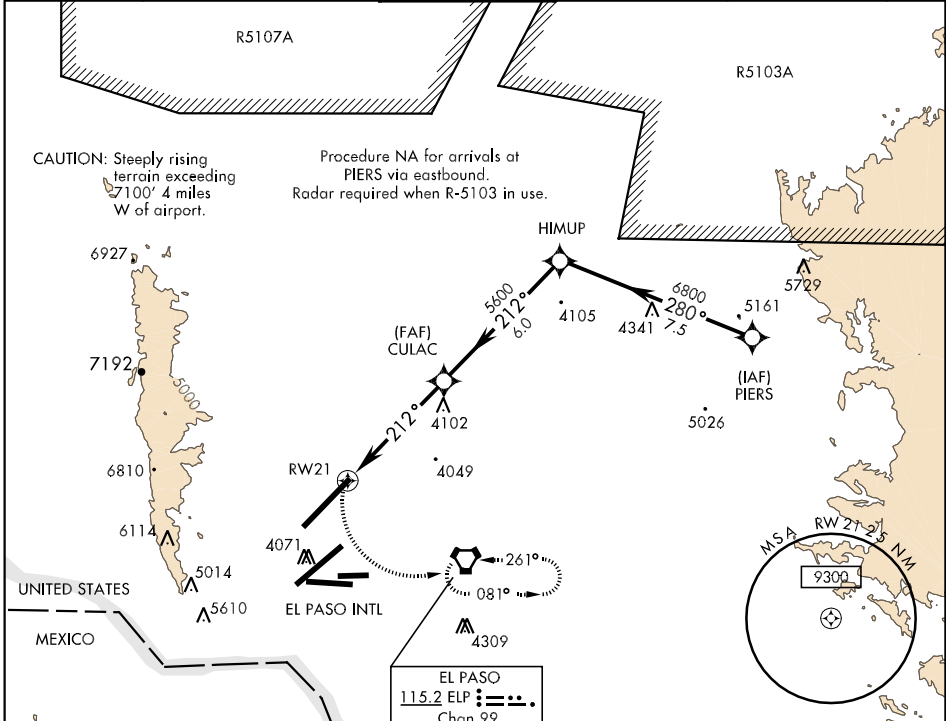
BIGGS AAF (KBIF)

DME/DME RNP-0.3 NA.



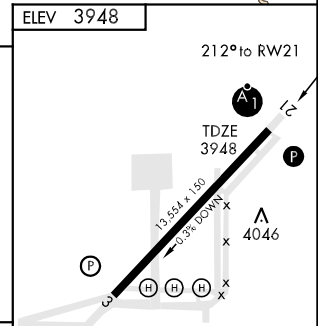
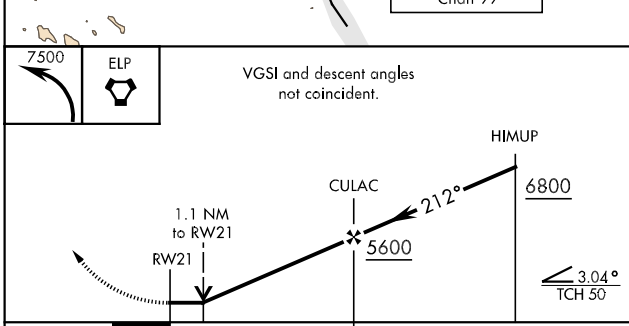
MISSED APPROACH: Climbing left turn to 7500 direct ELP VORTAC and hold, continue climb-in-hold to 7500.

ATIS 120.0 254.3	EL PASO APP CON S of V16 119.15 353.5 N of V16 124.25 298.85	BIGGS TOWER ★ 127.9 0 342.25	GND CON 121.6 237.6	EL PASO CLNC DEL 125.0 379.1	ASR
----------------------------	--	--	-------------------------------	--	-----



SC-3, 07 FEB 2013 to 07 MAR 2013

SC-3, 07 FEB 2013 to 07 MAR 2013



CATEGORY	A	B	C	D
RNAV MDA	4360-½	412 (500-½)	4360-¾	412 (500-¾)
CIRCLING	4360-1 412 (500-1)	4400-1 452 (500-1)	4400-1½ 452 (500-1½)	4500-2 552 (600-2)

FORT BLISS, TEXAS
 Orig 11237

31°51'N-106°23'W

BIGGS AAF (KBIF)

RNAV (GPS) RWY 21