

| | | | |
|--|------------------------|--|---|
| WAAS CH 99527 W24A | APP CRS 242° | Rwy Idg THRE Apt Elev 955 | 7799 954 955 |
|--|------------------------|--|---|

RNAV (GPS) RWY 24

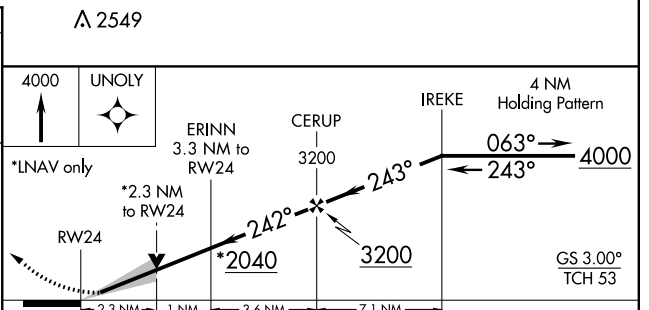
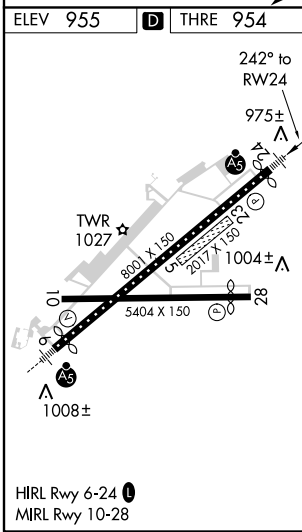
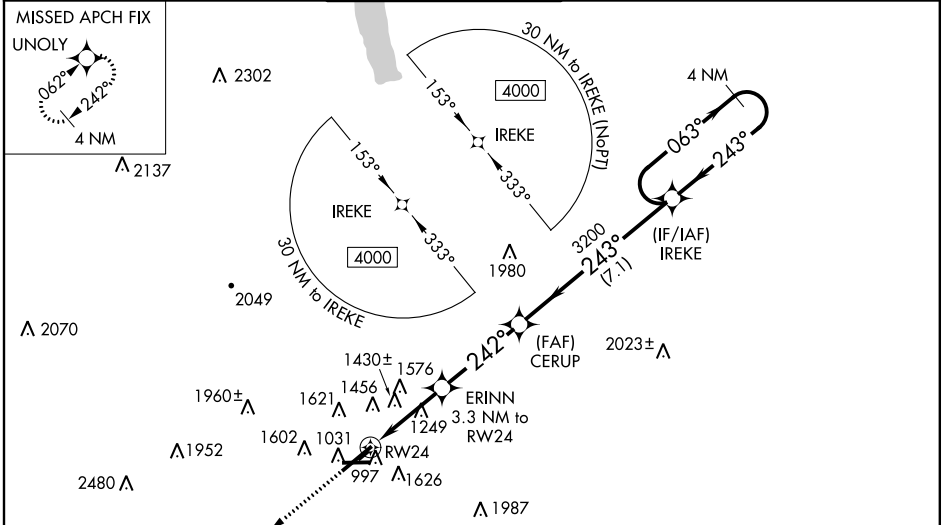
ELMIRA/CORNING RGNL (ELM)

MISSED APPROACH: Climb to 4000 direct UNOLY and hold.

MALSRS

****Missed approach requires a minimum climb of 260 feet per NM to 2300. Circling to Rwy 10 and 28 NA at night. DME/DME RNP-0.3 NA. For uncompensated Baro-VNAV systems, LNAV/VNAV NA below -16°C (4°F) or above 37°C (98°F). When local altimeter setting not received, use Penn Yan altimeter setting: increase LPV DA to 1420 and all Cats visibility ¼ mile; increase LNAV/VNAV DA to 1860 and all Cats visibility 1½ miles; increase all MDA 80 feet and LNAV Cats C/D visibility ½ mile; inoperative table does not apply to LNAV/VNAV; for inoperative MALSRS, increase LPV all Cats visibility to 1½. Baro-VNAV and VDP NA when using Penn Yan altimeter setting.**

| | | | | | |
|------------------------|---|---|-------------------------|--------------------------|-------------------------|
| ATIS 125.475 | ELMIRA APP CON * 119.45 257.8 | ELMIRA TOWER * 121.1 (CTAF) 257.8 | GND CON 121.9 | CLNC DEL 121.9 | UNICOM 122.95 |
|------------------------|---|---|-------------------------|--------------------------|-------------------------|



| CATEGORY | A | B | C | D |
|--------------|---------------------------------|---------------------------------|-------------------------|-------------------------|
| LPV DA** | | 1154/24 | 200 (200-1/2) | |
| LPV DA | | 1347/45 | 393 (400-7/8) | |
| LNAV/VNAV DA | | 1787-2 1/2 | 833 (900-2 1/2) | |
| LNAV MDA | 1740/24 786 (800-1/2) | 1740/40 786 (800-3/4) | 1740-1 3/4 | 786 (800-1 3/4) |
| CIRCLING | 2100-1 1/4 1145 (1200-1 1/4) | 2100-1 1/2 1145 (1200-1 1/2) | 2120-3 1165 (1200-3) | 2160-3 1205 (1300-3) |

NE-2, 07 FEB 2013 to 07 MAR 2013

NE-2, 07 FEB 2013 to 07 MAR 2013