

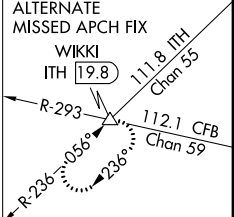
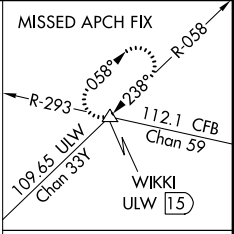
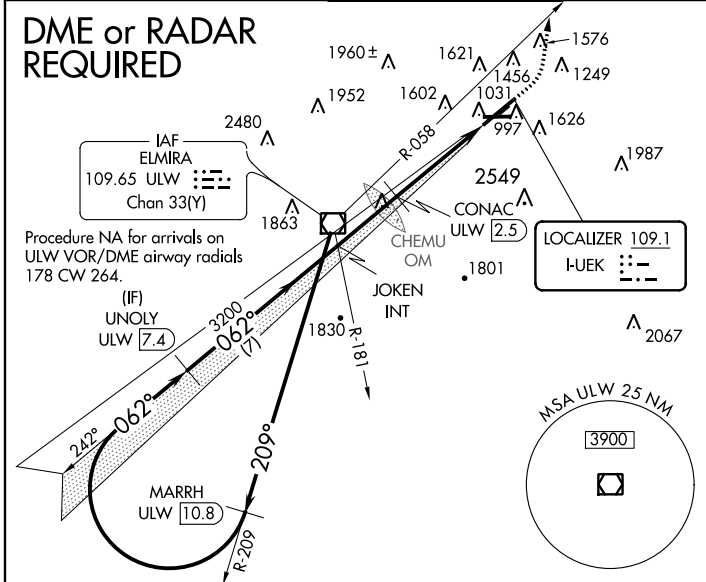
LOC I-UEK 109.1	APP CRS 062°	Rwy ldg 7401 THRE 940 Apt Elev 955
---------------------------	------------------------	--

ILS or LOC RWY 6
ELMIRA/CORNING RGNL (ELM)

▽ Circling to Rwy 10 and 28 NA at night. Inoperative table does not apply to S-LOC 6 Cats A/C/D. When local altimeter setting not received, use Penn Yan altimeter setting; increase S-ILS 6 DA to 1213; increase all MDA 80 feet and S-LOC 6 Cat B and CONAC fix minimums S-LOC 6 Cats C/D visibility ½ mile; inoperative table does not apply to S-LOC 6 all Cats and CONAC fix minimums S-LOC 6 Cats C/D; for inoperative MALSRL, increase S-ILS 6 all Cats visibility to ¾. **DME from ULW VOR/DME

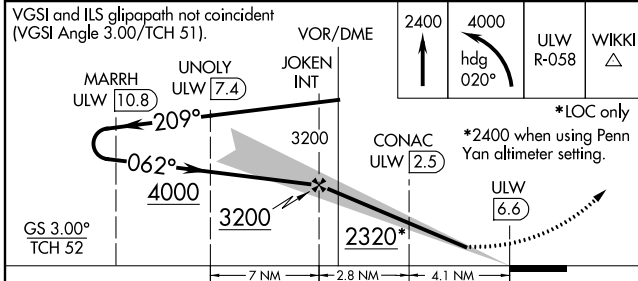
MALSRL
AS
MISSED APPROACH: Climb to 2400 then climbing left turn to 4000 on heading 020° and ULW VOR/DME R-058 to WIKKI INT/ULW 15 DME and hold, continue climb-in-hold to 4000.

ATIS 125.475	ELMIRA APP CON * 119.45 257.8	ELMIRA TOWER * 121.1 (CTAF) 0 257.8	GND CON 121.9	CLNC DEL 121.9	UNICOM 122.95
------------------------	---	---	-------------------------	--------------------------	-------------------------



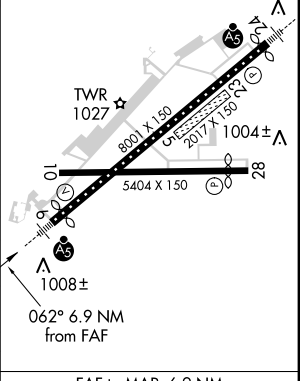
NE-2, 07 FEB 2013 to 07 MAR 2013

NE-2, 07 FEB 2013 to 07 MAR 2013



ELEV 955	THRE 940
----------	----------

HIRL Rwy 6-24
MIRL Rwy 10-28



CATEGORY	A	B	C	D
S-ILS 6		1140-½	200 (200-½)	
S-LOC 6	2320-¾ 1380 (1400-¾)	2320-1 1380 (1400-1)	2320-3	1380 (1400-3)
CIRCLING	2320-1¼ 1365 (1400-1¼)	2320-1½	2320-3	1365 (1400-3)
CONAC FIX MINIMUMS**				
S-LOC 6	2020-¾ 1080 (1100-¾)	2020-1 1080 (1100-1)	2020-2½	1080 (1100-2½)
CIRCLING	2100-1¼ 1145 (1200-1¼)	2100-1½	2120-3	2160-3 1205 (1300-1)

FAF to MAP 6.9 NM					
Knots	60	90	120	150	180
Min:Sec	6:54	4:36	3:27	2:46	2:18