


| | | | |
|--------------|-------------|----------|-------------|
| LOC I-ELM | APP CRS | Rwy ldg | 7599 |
| 109.1 | 242° | THRE | 954 |
| | | Apt Elev | 955 |

ILS or LOC RWY 24

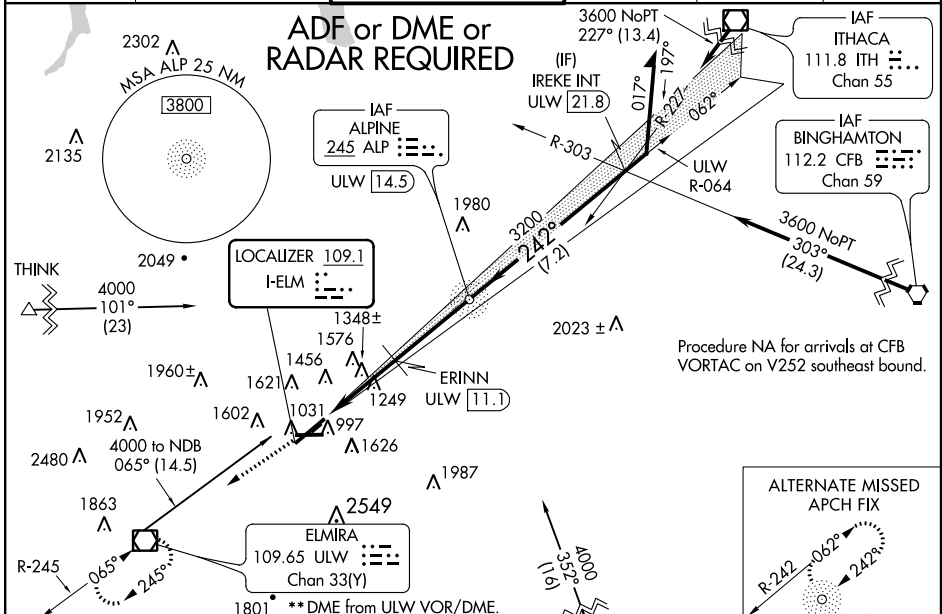
ELMIRA/CORNING RGNL (ELM)

⚠ For inoperative MALS/R, increase S-ILS Rwy 24 all Cats visibility to 1¼. Circling to Rwy 10 and 28 NA at night. When local altimeter setting not received, use Penn Yan altimeter setting: increase S-ILS 24 DA to 1418 and all Cats visibility ¼ mile; increase all MDA 80 feet and S-LOC 24 Cats A/C/D visibility ½ mile and ERINN fix minimums S-LOC 24 Cats C/D visibility ¼ mile; inoperative table does not apply to S-LOC 24 Cats A/C/D. # Missed approach requires a minimum climb of 260 feet per NM to 2300.

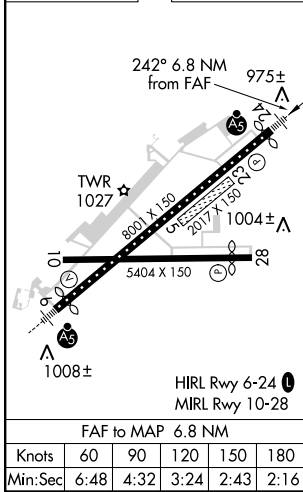
MALS/R 

MISSED APPROACH: Climb to 4000 direct ULW VOR/DME and hold, continue climb-in-hold to 4000.

| | | | | | |
|----------------|---------------------|---------------------------|--------------|--------------|---------------|
| ATIS | ELMIRA APP CON * | ELMIRA TOWER * | GND CON | CLNC DEL | UNICOM |
| 125.475 | 119.45 257.8 | 121.1 (CTAF) 257.8 | 121.9 | 121.9 | 122.95 |



| | | |
|----------|----------|----------|
| ELEV 955 | D | THRE 954 |
|----------|----------|----------|



| CATEGORY | A | B | C | D |
|----------------------|---------------------------|--------------------------|---------------------------|-------------------------|
| S-ILS 24 # | | 1154/24 | 200 (200-½) | |
| S-ILS 24 | | 1345/45 | 391 (400-¾) | |
| S-LOC 24 | 2040/40 1086 (1100-¾) | 2040/55 1086 (1100-¼) | 2040-2½ 1086 (1100-2½) | |
| CIRCLING | 2100-1¼ 1145 (1200-1¼) | 2100-½ 1145 (1200-½) | 2120-3 1165 (1200-3) | 2160-3 1205 (1300-3) |
| ERINN FIX MINIMUMS** | | | | |
| S-LOC 24 | 1600/24 | 646 (700-½) | 1600-1¾ | 646 (700-1¾) |
| CIRCLING | 2100-1¼ 1145 (1200-1¼) | 2100-½ 1145 (1200-½) | 2120-3 1165 (1200-3) | 2160-3 1205 (1300-3) |

NE-2, 07 FEB 2013 to 07 MAR 2013

NE-2, 07 FEB 2013 to 07 MAR 2013