

ELMIRA THREE DEPARTURE

SL-131 (FAA)

ELMIRA/CORNING RGNL (E.I.M)
ELMIRA, NEW YORK

ATIS 125.475
 CLNC DEL
 121.9
 GND CON
 121.9
 ELMIRA TOWER *
 121.1 (CTAF) 257.8
 ELMIRA DEP CON *
 119.45 257.8

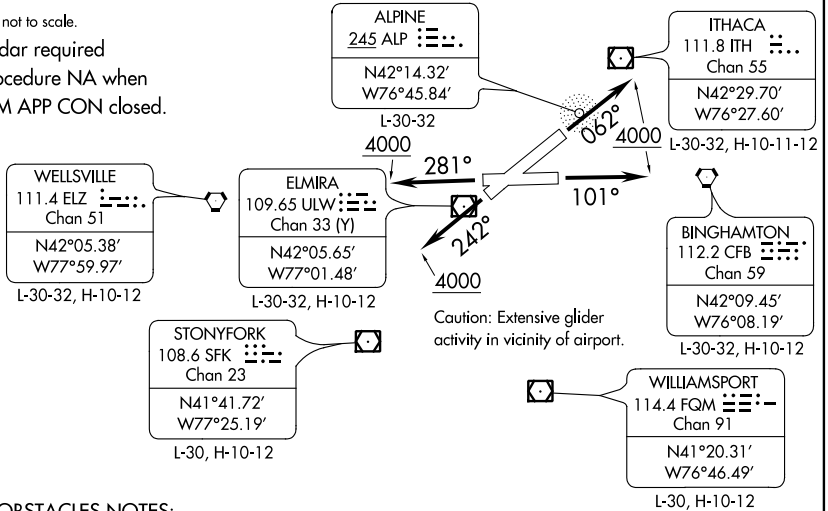
TAKEOFF MINIMUMS:

Rwys 5, 23: NA - ATC.
 Rwy 6: 500-2¾ or standard with minimum climb of 338' per NM to 1600.
 Rwy 10: 500-2 with minimum climb of 269' per NM to 2200 or standard with minimum climb of 400' per NM to 1600.
 Rwy 24: Standard with minimum climb of 405' per NM to 2300.
 Rwy 28: 800-3 with minimum climb of 373' per NM to 2400 or standard with minimum climb of 639' per NM to 2000.

NOTE: Chart not to scale.

NOTE: Radar required

NOTE: Procedure NA when
ELM APP CON closed.



TAKEOFF OBSTACLES NOTES:

- Rwy 6: Trees beginning 581' from DER, 513' left of centerline, up to 34' AGL/1023' MSL. Trees beginning 3057' from DER, 192' right of centerline, up to 45' AGL/1044' MSL. Trees 1.5 NM from DER, 2967' left of centerline, up to 74' AGL/1363' MSL. Trees 2.1 NM from DER, 3856' left of centerline, up to 49' AGL/1428' MSL. Trees 2.2 NM from DER, 3892' left of centerline, up to 56' AGL/1335' MSL.
- Rwy 10: Wall, building, poles, and trees beginning 25' from DER, 37' left of centerline, up to 52' AGL/1021' MSL. Poles and trees beginning 128' from DER, 110' right of centerline, up to 99' AGL/1096' MSL. Trees 1.3 NM from DER, 2592' right of centerline, up to 92' AGL/1351' MSL. Trees 1.3 NM from DER, 2662' right of centerline, up to 97' AGL/1357' MSL. Communications tower 1.7 NM from DER, 1756' right of centerline, 249' AGL/1236' MSL.
- Rwy 24: Terrain, sign, and trees beginning 34' from DER, 13' left of centerline, up to 59' AGL/1005' MSL. Terrain beginning 11' from DER, 8' right of centerline, up to 944' MSL.
- Rwy 28: Antenna and trees beginning 7' from DER, 186' left of centerline, up to 100' AGL/1039' MSL. Terrain, vehicles on road, tower, antenna, buildings, poles and trees beginning 27' from DER, 369' right of centerline, up to 90' AGL/1079' MSL. Trees 1.4 NM from DER, 2095' right of centerline, up to 75' AGL/1624' MSL. Trees 1.7 NM from DER, 2432' right of centerline, up to 59' AGL/1708' MSL. Trees 2.5 NM from DER, 4399' right of centerline, up to 53' AGL/1672' MSL.

DEPARTURE ROUTE DESCRIPTION

- TAKEOFF RUNWAY 06: Climb heading 062° to 4000, thence. . .
- TAKEOFF RUNWAY 10: Climb heading 101° to 4000, thence. . .
- TAKEOFF RUNWAY 24: Climb heading 242° to 4000, thence. . .
- TAKEOFF RUNWAY 28: Climb heading 281° to 4000, thence. . .

. . . . expect radar vectors to join assigned route/fix. Expect clearance to filed altitude ten minutes after departure.

LOST COMMUNICATIONS: If radio contact is not established/lost within 2 minutes after departure, Proceed on course and climb to 5000. Ten minutes after departure, climb to filed altitude/flight level.

ELMIRA THREE DEPARTURE

ELMIRA, NEW YORK
ELMIRA/CORNING RGNL (E.I.M)

NE-2, 07 FEB 2013 to 07 MAR 2013

NE-2, 07 FEB 2013 to 07 MAR 2013