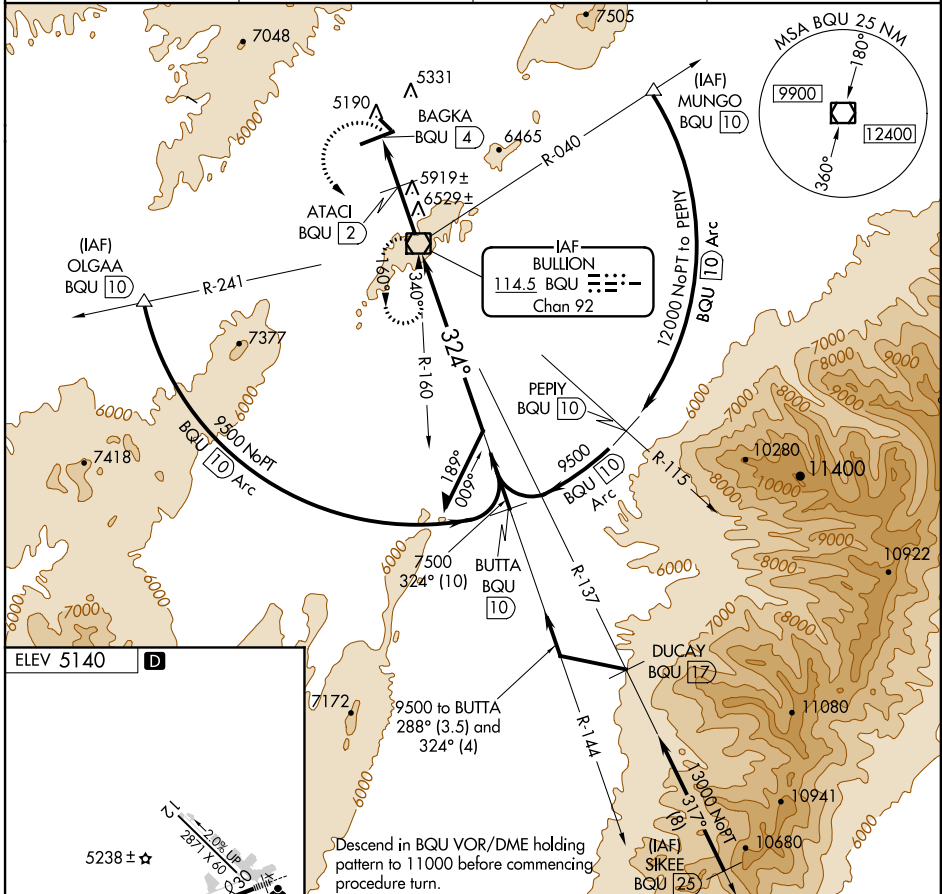


# VOR/DME-B ELKO RGNL (EKO)

VOR/DME BQU <b>114.5</b> Chan <b>92</b>	APP CRS <b>324°</b>	Rwy Idg TDZE Apt Elev <b>N/A</b> <b>N/A</b> <b>5140</b>
---	------------------------	--

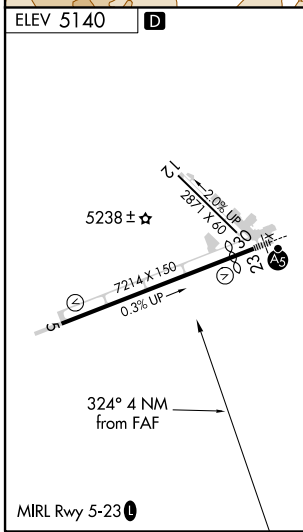
**▽**  
**▲** MISSED APPROACH: Climbing left turn to 10000 direct BQU VOR/DME and hold.

ASOS <b>119.275</b>	SALT LAKE CENTER <b>132.25 338.35</b>	UNICOM <b>123.0 (CTAF)</b>	<b>122.7</b> <b>●</b>
------------------------	--	-------------------------------	-----------------------



SW-4, 07 FEB 2013 to 07 MAR 2013

SW-4, 07 FEB 2013 to 07 MAR 2013



BQU	VOR/DME		Remain within 10 NM		
	ATACI BQU (2)	144°	324°	9500	
BAGKA BQU (4)	6860	7500			
CATEGORY		A	B	C	D
CIRCLING		6260-1¼ 1120 (1200-1¼)	6260-1½ 1120 (1200-1½)	6260-3	1120 (1200-3)