

ELKO, NEVADA


AL-129 (FAA)

LDA/DME RWY 23

ELKO RGNL (EKO)

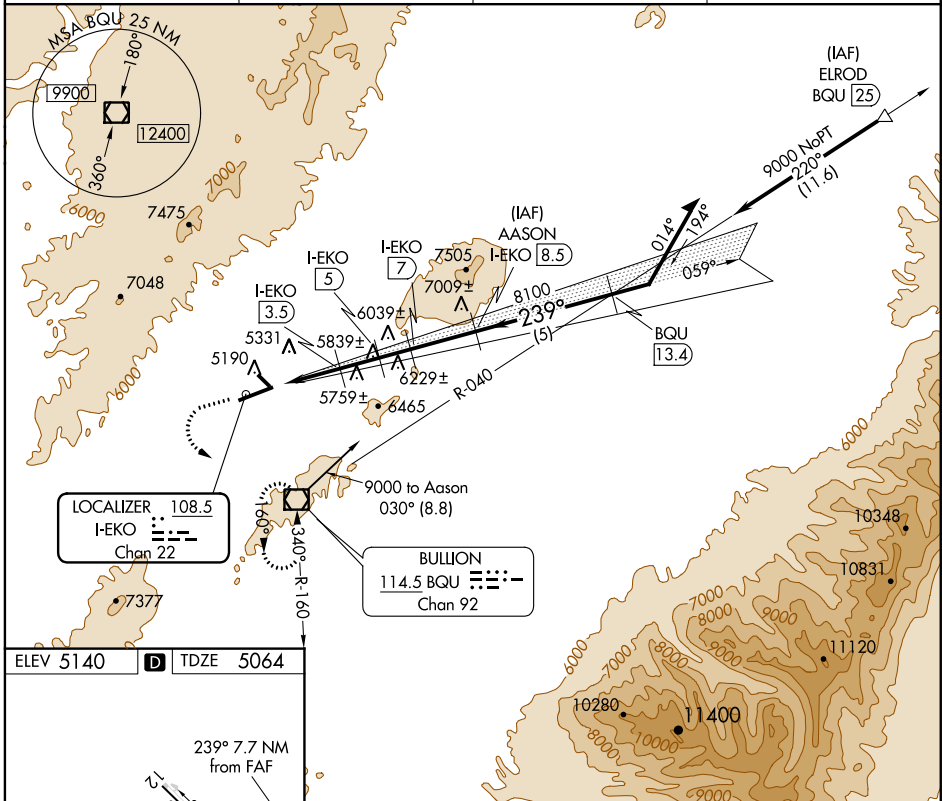
LOC/DME I-EKO 108.5 Chan 22	APP CRS 239°	Rwy Idg TDZE Apt Elev	6410 5064 5140
--	------------------------	-----------------------------	---

⚠ Inoperative table does not apply to Cat. A and B.

MALSR 

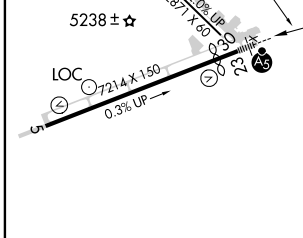
MISSED APPROACH: Climb to 6300 then climbing left turn to 10000 direct BQU VOR/DME and hold.

ASOS 119.275	SALT LAKE CENTER 132.25 338.35	UNICOM 123.0 (CTAF)	122.7 
------------------------	--	-------------------------------	--



SW-4, 07 FEB 2013 to 07 MAR 2013

ELEV 5140	D	TDZE 5064
-----------	----------	-----------



CATEGORY	A	B	C	D
S-23	5660-1 596 (600-1)			5660-1¼ 596 (600-1¼)
CIRCLING	6020-1 880 (900-1)	6020-1¼ 880 (900-1¼)	6140-3 1000 (1000-3)	6220-3 1080 (1100-3)

ELKO, NEVADA
Amdt 5 12040

40°50'N-115°48'W

ELKO RGNL (EKO)

LDA/DME RWY 23