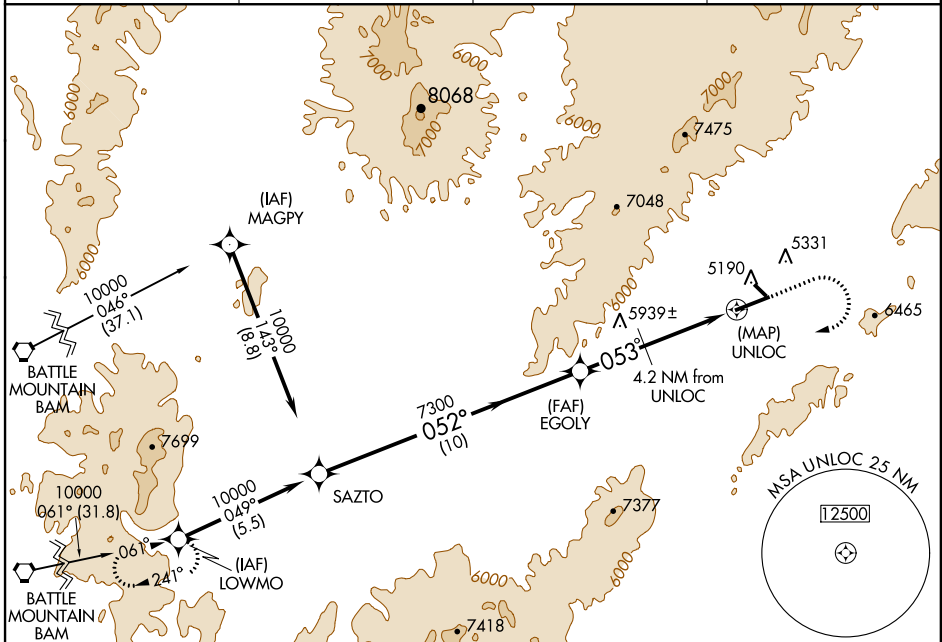


# GPS RWY 5 ELKO RGNL (EKO)

APP CRS	Rwy Idg	<b>7214</b>
<b>053°</b>	TDZE	<b>5047</b>
	Apt Elev	<b>5140</b>

**NA** MISSED APPROACH: Climb to 6600, then climbing right turn to 10000 direct LOWMO WP and hold.

ASOS <b>119.275</b>	SALT LAKE CENTER <b>132.25 338.35</b>	UNICOM <b>123.0 (CTAF)</b>	<b>122.7</b>
------------------------	--	-------------------------------	--------------



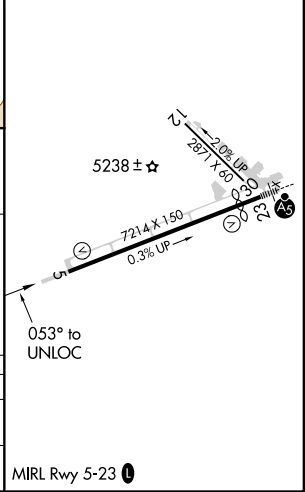
SW-4, 07 FEB 2013 to 07 MAR 2013

SW-4, 07 FEB 2013 to 07 MAR 2013

ELEV 5140	<b>D</b>	TDZE 5047
-----------	----------	-----------



	SAZTO	EGOLY	UNLOC
Procedure Turn	NA	NA	NA
	10000	7300	6720
	052°	053°	
	10 NM	1.8 NM	4.2 NM



CATEGORY	A	B	C	D
S-5	6220-1¼ 1173 (1100-1¼)	6220-1½ 1173 (1100-1½)	6220-3	1173 (1100-3)
CIRCLING	6220-1¼ 1085 (1100-1¼)	6220-1½ 1085 (1100-1½)	6220-3	1085 (1100-3)

MIRA Rwy 5-23