

APP CRS 331°	Rwy Idg TDZE Apt Elev	N/A N/A 1987
------------------------	-----------------------------	---

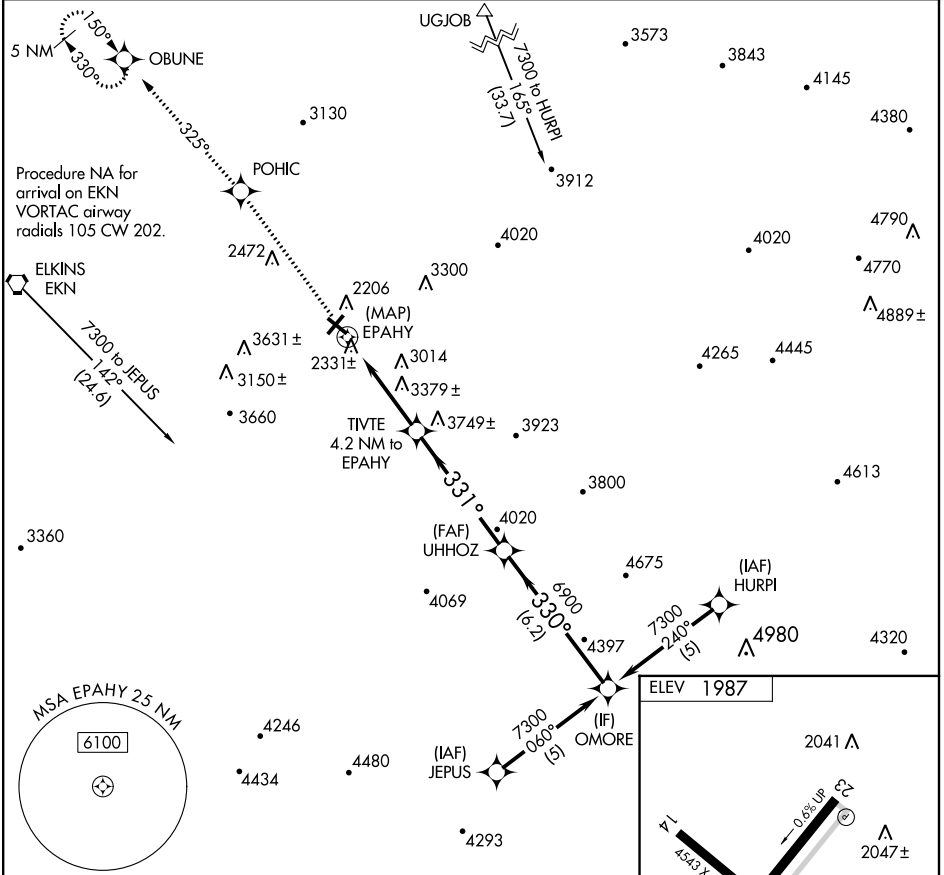
RNAV (GPS)-A

ELKINS-RANDOLPH CO-JENNINGS RANDOLPH FIELD (EKN)

▼ DME/DME RNP-0.3 NA. Procedure NA at night. When local altimeter setting not received, use Buckhannon altimeter setting and increase all MDA 100 feet.

▲ MISSED APPROACH: Climb to 4500 direct POHIC and via track 325° to OBUNE and hold.

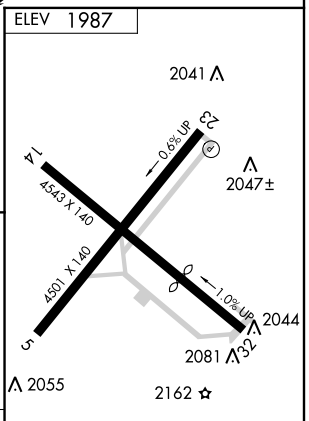
ASOS 119.275	CLARKSBURG APP CON* 121.15 284.65	ELKINS RADIO 123.6 (CTAF)	122.9
------------------------	---	-------------------------------------	--------------



NE-4, 07 FEB 2013 to 07 MAR 2013

NE-4, 07 FEB 2013 to 07 MAR 2013

4500	POHIC	track 325°	OBUNE	OMORE
EPAHY	TIVTE 4.2 NM to EPAHY	UHHOZ	7300	Procedure Turn NA
5300	6900	331°	330°	
4.2 NM	5.3 NM	6.2 NM		



CATEGORY	A	B	C	D
CIRCLING	3640-1¼ 1653 (1700-1¼)	3640-1½ 1653 (1700-1½)	3640-3 1653 (1700-3)	NA

REIL Rwy 23 **Ⓛ**
MIRL Rwy 5-23 **Ⓛ**