

APP CRS	Rwy Idg	<b>4501</b>
<b>032°</b>	TDZE	<b>1973</b>
	Apt Elev	<b>1987</b>

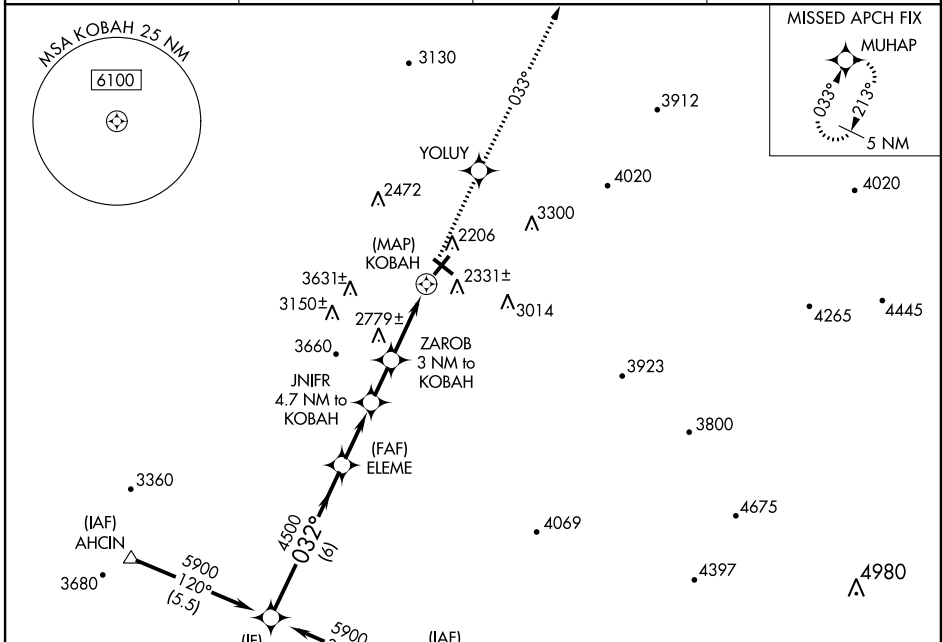
# RNAV (GPS) RWY 5

ELKINS-RANDOLPH CO-JENNINGS RANDOLPH FIELD (EKN)

**⚠** Circling NA at night. DME/DME RNP-0.3 NA. Visibility reduction by helicopters NA. When local altimeter setting not received, use Buckhannon altimeter setting and increase all MDA 100 ft. \*3800 when using Buckhannon altimeter setting. \*\*3460 when using Buckhannon altimeter setting. Straight-in minimums NA when using Buckhannon altimeter setting.

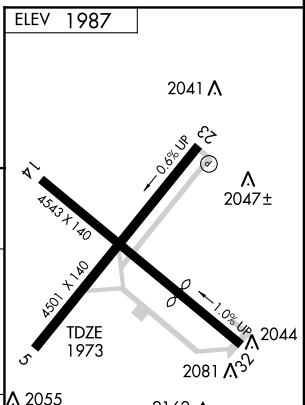
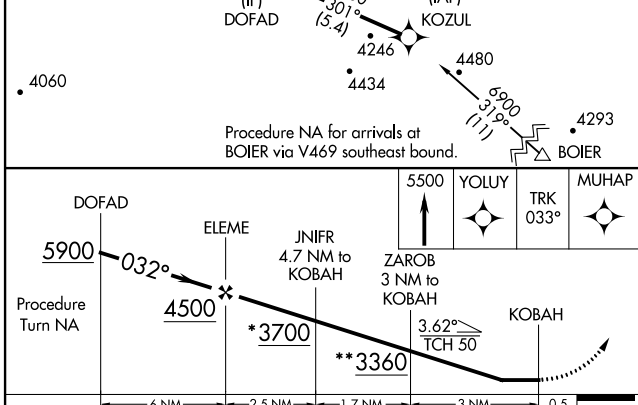
**MISSED APPROACH:** Climb to 5500 direct YOLUY and via track 033° to MUHAP and hold.

ASOS <b>119.275</b>	CLARKSBURG APP CON * <b>121.15 284.65</b>	ELKINS RADIO <b>123.6</b> (CTAF)	<b>122.9</b>
------------------------	--	-------------------------------------	--------------



NE-4, 07 FEB 2013 to 07 MAR 2013

NE-4, 07 FEB 2013 to 07 MAR 2013



CATEGORY	A	B	C	D
LNVA MDA	3040-1½ 1067 (1100-1½)	3040-1½ 1067 (1100-1½)	3040-3 1067 (1100-3)	3320-3 1333 (1400-3)
CIRCLING	3040-1½ 1053 (1100-1½)	3040-1½ 1053 (1100-1½)	3200-3 1213 (1300-3)	3320-3 1333 (1400-3)

REIL Rwy 23

MIRL Rwy 5-23

# RNAV (GPS) RWY 5