

APP CRS 211°	Rwy Idg 4501
	TDZE 1958
	Apt Elev 1987

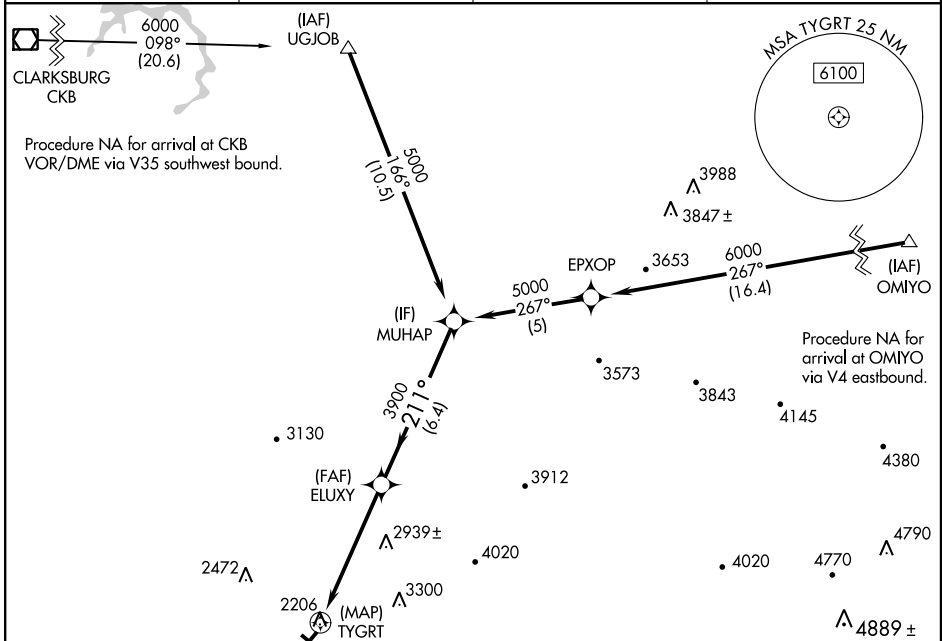
RNAV (GPS) RWY 23

ELKINS-RANDOLPH CO-JENNINGS RANDOLPH FIELD (EKN)

⚠ Circling NA at night. DME/DME RNP-0.3 NA. Visibility reduction by helicopters NA. When local altimeter setting not received, use Buchhannon altimeter setting and increase all MDA 100 feet.

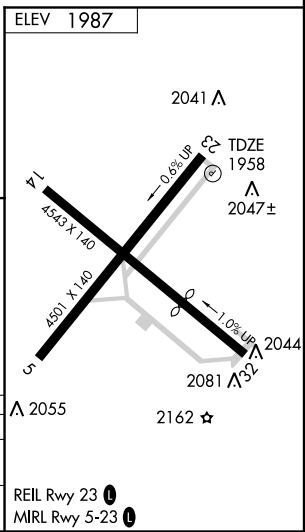
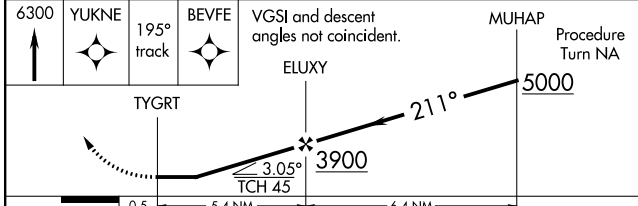
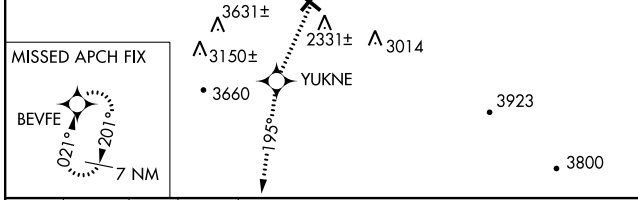
⚠ MISSED APPROACH: Climb to 6300 direct YUKNE and via 195° track to BEVFE and hold, continue climb-in-hold to 6300.

ASOS 119.275	CLARKSBURG APP CON * 121.15 284.65	ELKINS RADIO 123.6 (CTAF)	122.9 0
------------------------	--	-------------------------------------	-----------------------



NE-4, 07 FEB 2013 to 07 MAR 2013

NE-4, 07 FEB 2013 to 07 MAR 2013



CATEGORY	A	B	C	D
LNVA MDA	3160-1½ 1202 (1200-1½)	3160-1½ 1202 (1200-1½)	3160-3	1202 (1200-3)
CIRCLING	3160-1½ 1173 (1200-1½)	3160-1½ 1173 (1200-1½)	3200-3 1213 (1300-3)	3320-3 1333 (1400-3)

REIL Rwy 23 **0**

MIRL Rwy 5-23 **0**