

APP CRS <b>150°</b>	Rwy Idg <b>4543</b>
	TDZE <b>1968</b>
	Apt Elev <b>1987</b>

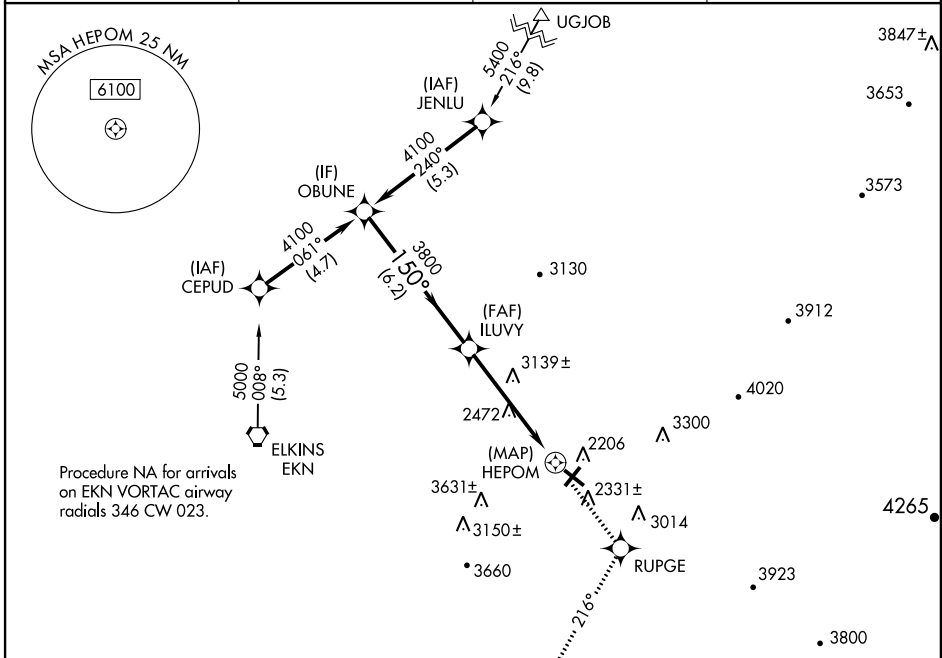
# RNAV (GPS) RWY 14

ELKINS-RANDOLPH CO-JENNINGS RANDOLPH FIELD (EKN)

**⚠** DME/DME RNP-0.3 NA. Procedure NA at night. When local altimeter setting not received, use Buchannon altimeter setting and increase all MDA 100 feet. Visibility reduction by helicopters NA.

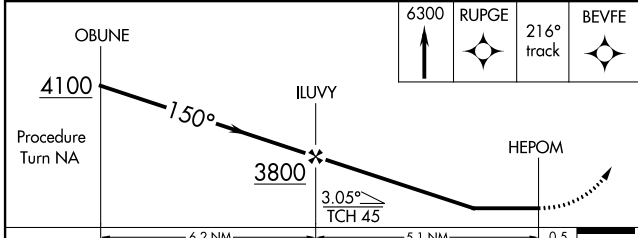
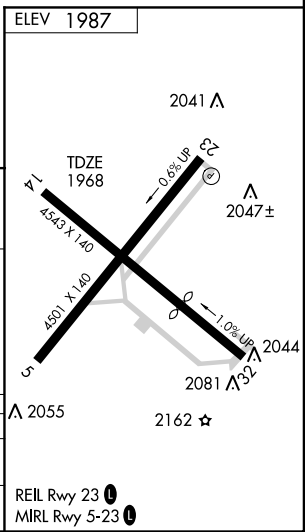
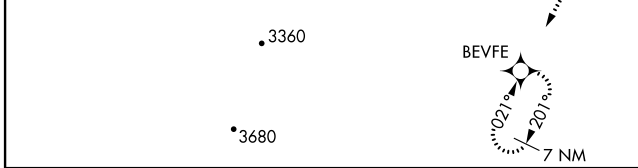
**⚠** MISSED APPROACH: Climb to 6300 direct RUPGE and via 216° track to BEVFE and hold, continue climb-in-hold to 6300.

ASOS <b>119.275</b>	CLARKSBURG APP CON* <b>121.15 284.65</b>	ELKINS RADIO <b>123.6</b> (CTAF)	<b>122.9</b> <b>Ⓛ</b>
------------------------	---	-------------------------------------	-----------------------



NE-4, 07 FEB 2013 to 07 MAR 2013

NE-4, 07 FEB 2013 to 07 MAR 2013



CATEGORY	A	B	C	D
LNVA MDA	3400-1½ 1432 (1500-1½)	3400-1½ 1432 (1500-1½)	3400-3	1432 (1500-3)
CIRCLING	3400-1½ 1413 (1500-1½)	3400-1½ 1413 (1500-1½)	3400-3	1413 (1500-3)