

RNAV (GPS) RWY 31

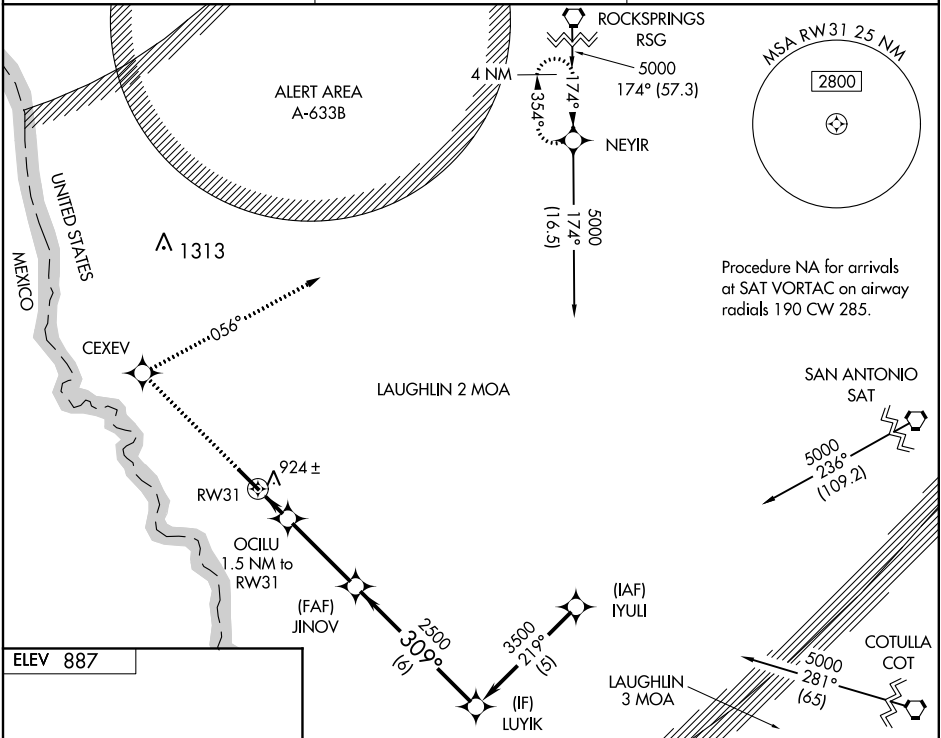
EAGLE PASS/ MAVERICK COUNTY MEMORIAL INTL (5T9)

WAAS CH 63207 W31A	APP CRS 309°	Rwy Idg TDZE Apt Elev	5506 882 887
----------------------------------------	------------------------	-----------------------------	-----------------------------------------

▼ Baro-VNAV NA. DME/DME RNP-0.3 NA. Use Laughlin AFB altimeter setting; when not received, use Del Rio Int'l altimeter setting.
▲ NA

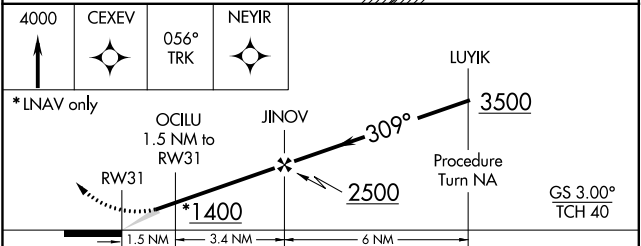
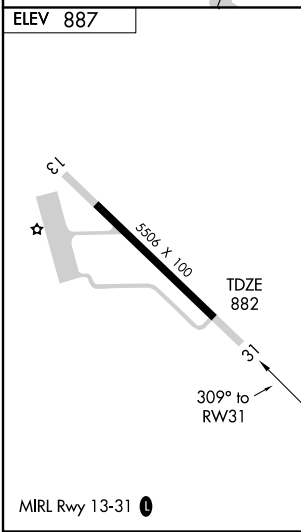
MISSED APPROACH: Climb to 4000 direct CEDEV and via 056° track to NEYIR and hold.

LAUGHLIN AFB ATIS 114.4	DEL RIO APP CON 127.75 326.2	UNICOM 122.8 (CTAF) 0
-----------------------------------	----------------------------------------	----------------------------------------



SC-3, 07 FEB 2013 to 07 MAR 2013

SC-3, 07 FEB 2013 to 07 MAR 2013



CATEGORY	A	B	C	D
LPV DA	1236-1¼		354 (400-1¼)	
LNAV/ VNAV DA	1298-1½		416 (500-1½)	
LNAV MDA	1280-1		398 (400-1)	
CIRCLING	1500-1 613 (700-1)		1500-1¾ 613 (700-1¾)	

RNAV (GPS) RWY 31